



SCHOOLS OF EMINENCE

Department of School Education, Punjab 2023





CONTENTS

1

Overview

2

Vision

3

Mission

4

Objective

5

Pillars of Eminence



OVERVIEW

In the first phase, 117 Government senior secondary schools across all 23 districts of Punjab have been chosen to embark on the journey to be transformed into "Schools of Eminence." These schools will cater to students from classes 9th to 12th.

Admission into a 'School of Eminence' in a specified geographical cluster will be based on an aptitude test and further screening. The intake of students to be 75% from Government schools and 25% from other schools.



VISION

The “Schools of Eminence” program aims to re-imagine education in Government schools envisioning holistic development of students and preparing them to be responsible 21st-century citizens



MISSION

To build centres of excellence to redefine education for students of Punjab by providing enriching learning experiences through innovative pedagogical practices, world-class infrastructure, visionary school leadership and demonstrative capabilities that can be scaled

INNOVATE

INITIATE

INSPIRE



OBJECTIVE

- **To fulfil the vision of the Government of Punjab towards school education and to showcase the implementation of all aspects of NEP 2020**
- **To provide learning spaces for students to imbibe knowledge, to grow in a safe and joyful environment and to nurture their intrinsic curiosity for their physical, cognitive, social and emotional development through contemporary pedagogical practices**
- **To make SoEs a demonstrative ground for other schools, to develop champion school heads and academic leaders and to enable a shared understanding of excellence in education for scalable solutions**



PILLARS OF EMINENCE

1

Infrastructure



2

Academics



3

Human Resource Management



4

Sports & Co-curricular Activities



5

Community Engagement





INFRASTRUCTURE

This pillar focuses on infrastructure which is crucial for a conducive learning environment. Well-maintained, painted and accessible school premises, clean and green environment, well-lit and spacious classrooms, library with age-appropriate books, laboratories, access to ICT facilities and good sports infrastructure make for happy learning spaces

Focus areas:

- Aesthetically appealing school building and campus with eco-friendly practices
- Sufficient ultra-modern furniture and all other required facilities
- Playground with sports equipment
- Potable drinking water, clean and sufficient sanitation facilities and proper waste management
- Safety Provisions

Features of SoE:

Schools with access to state-of-the-art infrastructure and sufficient resources to provide diverse learning environments to students

Schools with adequate office spaces, meeting spaces and ICT facilities for academic and administrative purposes

Schools with effective preventive health care practices

Schools with barrier free access in terms of physical environment for students with special needs (CWSN)

Schools with safe and healthy environment where the child's physical and mental well-being is taken care of

Schools with tinkering and virtual reality labs to promote curiosity and innovation



ACADEMICS

This pillar emphasizes the need of different teaching-learning approaches and practices to be followed by teachers.

Curriculum planning, defining student outcomes, using innovative pedagogies in the classroom, child- friendly practices and multiple assessment strategies for better learning outcomes



Focus areas:

- Holistic curriculum planning
- Learner centric pedagogical approaches
- Student performance, assessment of learning outcomes and feedback mechanism
- Counselling and career guidance
- Coaching for competitive exams
- Personality development with values and ethics

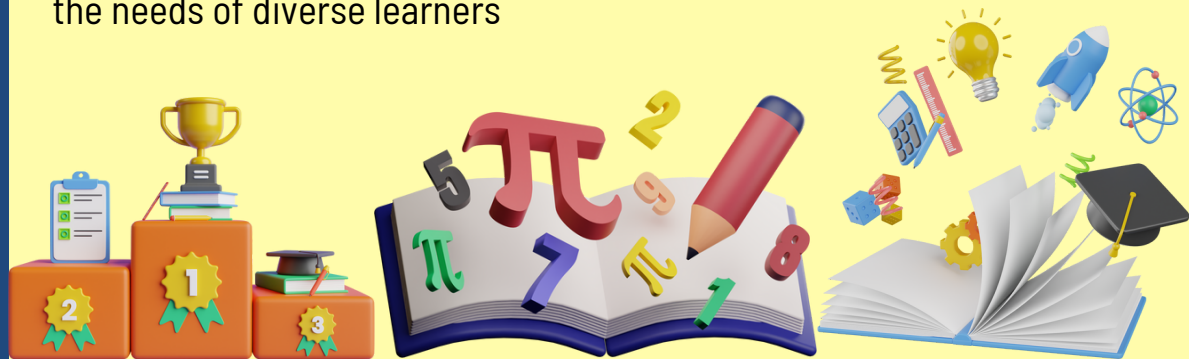
Features of SoE:

School leaders and teachers will follow a prescribed curriculum

Prepare an annual academic calendar & detailed teaching plans

Effective monitoring of students performance

Employment of innovative tools, contemporary teaching practices and multiple modes of competency based assessment to cater the needs of diverse learners





HUMAN RESOURCE MANAGEMENT

This pillar focuses on strategic approaches for efficient management of schools such that both academic and support staff contribute their best towards the development of the school. Zero vacancy, continuous support and capacity building of staff as well as incentives and appreciation to ensure a culture of excellence and innovation through collaboration

Focus areas:

- Sufficiency of school staff (school head, academic and supporting staff)
- Pedagogical leadership
- Mechanisms for feedback and grievance redressal
- Continuous professional development of staff
- Satisfactory working conditions for staff

Features of SoE:

Schools to have a sufficient number of academic and supporting staff for the effective functioning of the school

Periodic capacity-building programmes for updating the skills of all staff members

Schools to have an established mechanism to recognize best practices and assist staff in their professional growth

School leaders and staff to promote excellence in all aspects of school management

Schools to be spaces where the staff share and celebrate together

Schools to maintain standard pupil-teacher ratio



SPORTS & CO-CURRICULAR ACTIVITIES

This pillar will focus on integrating arts, culture, values, life skills and sports into teaching & learning practices as part of the curriculum. Use of interdisciplinary approaches to achieve student learning outcomes to nurture skills like literary and creative skills, scientific temperament, ICT skills, digital literacy, team building and leadership



Focus areas:

- Mainstreaming physical education and sports
- Removing attitudinal barriers
- Focusing on soft skills, values, ethics AND connecting students with their culture and heritage
- Study tours and exposure visits
- Personality development

Features of SoE:

Schools to provide facilities and opportunities to nurture student's skills in extra and co-curricular activities

Schools to follow systems and practices that build a culture of inclusivity and acceptance

School will foster values through a climate of care, compassion, and respect





COMMUNITY ENGAGEMENT

This pillar focuses on symbiotic collaboration between the school and the community for ensuring student achievement and well being and development of the community. Parents, students, teachers, alumni and community members are seen as partners in qualitative growth of the school



Focus areas:

- Parent engagement
- Student engagement
- Alumni engagement
- Community engagement (School Management Committees)
- Community for schools - schools for community

Features of SoE:

Schools to provide a platform for parents, alumni and the community to actively get involved as partners in the continuous development of the school and its surrounding

Schools to ensure student participation in community outreach programmes to address various social and environmental issues





Aspire to be an SoE student



learn through
innovative teaching
practices



safe, healthy,
inclusive and
accessible
environment



state of the art
learning spaces and
infrastructure



career guidance
coaching for
professional exams



hone skills in art,
music, dance, sports &
vocational education



get inspired by
visionary leaders



connect with alumni
and community



Aspire to be an SoE teacher



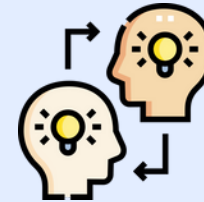
Continuous Professional
Development



Exposure visits to acquire
best practices



Recognition & Appreciation



Mentoring on progressive
pedagogical practices

Aspire to be an SOE principal



Autonomy to lead
school initiatives



Access to eminent
leaders across sectors



Additional
grants



Consistent support
from the state



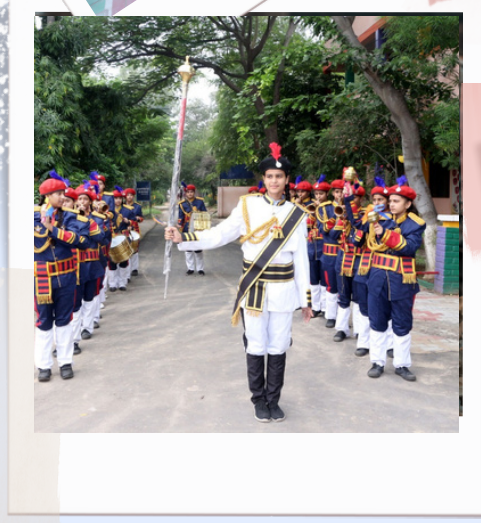
Camaraderie with other
visionary school leaders



Experience of international
exposure visits



Recognition at state
platforms



SCHOOLS OF EMINENCE