

**ਡਾਇਰੈਕਟਰ ਜਨਰਲ ਸਕੂਲ ਐਜੂਕੇਸ਼ਨ-ਕਮ-ਸਟੇਟ ਪ੍ਰੋਜੈਕਟ ਡਾਇਰੈਕਟਰ  
ਸਮੱਗਰਾ ਸਿੱਖਿਆ ਅਭਿਆਨ ਅਥਾਰਟੀ, ਪੰਜਾਬ,**

ਪੰਜਵੀ ਮੰਜਿਲ, ਈ ਬਲਾਕ, ਸਿੱਖਿਆ ਭਵਨ, ਪੀ.ਐਸ.ਈ.ਬੀ. ਕੰਪਲੈਕਸ, ਫੇਜ਼-8, ਐਸ.ਏ.ਐਸ ਨਗਰ  
ਫੋਨ ਨੰ:0172-5212364 Website: [www.ssapunjab.org](http://www.ssapunjab.org)

ਵੱਲ,

ਸੰਬੰਧਤ ਜ਼ਿਲ੍ਹਾ ਸਿੱਖਿਆ ਅਫ਼ਸਰ (ਐ.ਸਿ.)

ਅੰਮ੍ਰਿਤਸਰ, ਸ.ਭ.ਸ. ਨਗਰ, ਜਲੰਧਰ, ਲੁਧਿਆਣਾ, ਕਪੂਰਥਲਾ, ਤਰਨ-ਤਾਰਨ,  
ਹੁਸ਼ਿਆਰਪੁਰ ਅਤੇ ਗੁਰਦਾਸਪੁਰ।

ਮੀਮੋ ਨੰ : ਸਸਅ/ਐਮਸੀ/2019/ 344513

ਮਿਤੀ : 07-10-2019

**ਵਿਸ਼ਾ :-** ਸਾਲ 2018-19 ਵਿੱਚ ਰਾਜ ਦੇ ਮਿਡਲ ਸਕੂਲਾਂ ਵਿੱਚ ਪੜ੍ਹਦੇ ਵਿਦਿਆਰਥੀਆਂ ਨੂੰ  
ਜੰਗ-ਏ-ਆਜ਼ਾਦੀ ਮੈਮੋਰੀਅਲ ਕਰਤਾਰਪੁਰ ਦੀ ਕਰਵਾਈ ਗਈ ਵਿਜ਼ਿਟ ਸਬੰਧੀ।

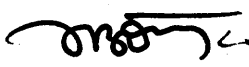
1.0 ਉਪਰੋਕਤ ਵਿਸ਼ੇ ਸਬੰਧੀ ਲਿਖਿਆ ਜਾਂਦਾ ਹੈ ਕਿ ਸਮੱਗਰਾ ਸਿੱਖਿਆ ਅਭਿਆਨ ਅਧੀਨ ਰਾਜ ਦੇ ਮਿਡਲ ਸਕੂਲਾਂ ਵਿੱਚ ਪੜ੍ਹਦੇ ਵਿਦਿਆਰਥੀਆਂ ਨੂੰ ਜੰਗ-ਏ-ਆਜ਼ਾਦੀ ਮੈਮੋਰੀਅਲ, ਕਰਤਾਰਪੁਰ ਜ਼ਿਲ੍ਹਾ ਜਲੰਧਰ ਦੀ ਵਿਜ਼ਿਟ ਕਰਵਾਈ ਗਈ ਸੀ। ਮੁੱਖ ਦਫ਼ਤਰ ਵੱਲੋਂ ਇਹ ਵਿਜ਼ਿਟ ਕਰਵਾਉਣ ਲਈ ਆਪ ਨੂੰ 200/- ਰੁਪਏ ਪ੍ਰਤੀ ਵਿਦਿਆਰਥੀ ਦੇ ਹਿਸਾਬ ਨਾਲ ਗ੍ਰਾਂਟ ਜਾਰੀ ਕੀਤੀ ਗਈ ਸੀ।

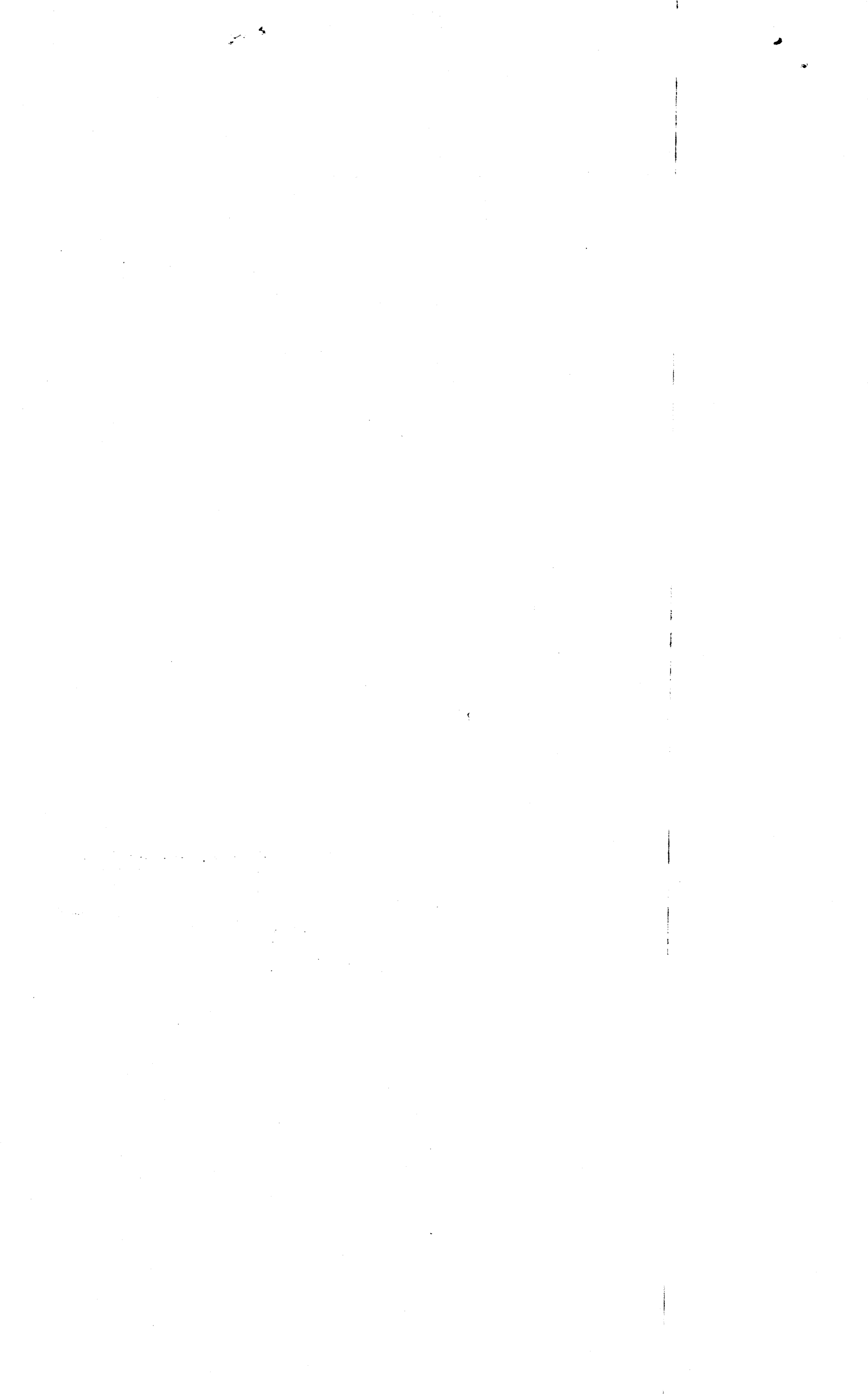
2.0 ਆਪ ਨੂੰ ਲਿਖਿਆ ਜਾਂਦਾ ਹੈ ਕਿ ਆਪ ਵੱਲੋਂ ਮੁੱਖ ਦਫ਼ਤਰ ਨੂੰ ਭੇਜੀ ਗਈ ਵਿਜ਼ਿਟ ਕੀਤੇ ਵਿਦਿਆਰਥੀਆਂ ਦੀ ਗਿਣਤੀ ਜੰਗ-ਏ-ਆਜ਼ਾਦੀ ਮੈਮੋਰੀਅਲ ਕਰਤਾਰਪੁਰ ਤੋਂ ਮਿਲੀ ਵਿਦਿਆਰਥੀਆਂ ਦੀ ਗਿਣਤੀ ਦੇ ਹਿਸਾਬ ਨਾਲ ਮਿਲ ਨਹੀਂ ਰਹੀ ਹੈ।

3.0 ਜੰਗ-ਏ-ਆਜ਼ਾਦੀ ਮੈਮੋਰੀਅਲ ਕਰਤਾਰਪੁਰ ਤੋਂ ਮਿਲੀ ਜ਼ਿਲ੍ਹਾਵਾਰ ਗਿਣਤੀ ਦੀ ਕਾਪੀ ਆਪ ਨੂੰ ਭੇਜਦੇ ਹੋਏ ਲਿਖਿਆ ਜਾਂਦਾ ਹੈ ਕਿ ਆਪ ਵੱਲੋਂ ਆਪਣੇ ਜ਼ਿਲ੍ਹੇ ਦੀ ਭੇਜੀ ਗਈ ਵਿਦਿਆਰਥੀਆਂ ਦੀ ਗਿਣਤੀ ਨੂੰ ਰੀ-ਚੈਕ ਕੀਤਾ ਜਾਵੇ ਅਤੇ ਵਿਜ਼ਿਟ ਕੀਤੇ ਵਿਦਿਆਰਥੀਆਂ ਦੀ ਗਿਣਤੀ ਅਨੁਸਾਰ ਕੁੱਲ ਬਣਦੀ ਰਾਸ਼ੀ ਵਿੱਚੋਂ ਬਚਦੀ ਰਾਸ਼ੀ ਮੁੱਖ ਦਫ਼ਤਰ ਨੂੰ ਵਾਪਿਸ ਕਰਦੇ ਹੋਏ ਮਿਤੀ 10.10.2019 ਤੱਕ ਮੁੱਖ ਦਫ਼ਤਰ ਨੂੰ ਈ-ਮੇਲ id [ssascience41@gmail.com](mailto:ssascience41@gmail.com) ਤੇ ਹਰ ਹਾਲਤ ਵਿੱਚ ਸੂਚਿਤ ਕੀਤਾ ਜਾਵੇ। ਆਪਣੇ ਜ਼ਿਲ੍ਹੇ ਦੀ ਸੂਚਨਾਂ ਹੇਠ ਲਿਖੇ ਫਾਰਮੈਟ ਵਿੱਚ ਭਰ ਕੇ ਮੁੱਖ ਦਫ਼ਤਰ ਨੂੰ ਉੱਕਤ ਈ-ਮੇਲ ਤੇ ਭੇਜੀ ਜਾਵੇ:

| ਲੜੀ ਨੰ. | ਜ਼ਿਲ੍ਹਾ | ਰੀ-ਚੈਕ ਉਪਰੰਤ ਪਾਈ ਗਈ ਵਿਦਿਆਰਥੀਆਂ ਦੀ ਕੁੱਲ ਗਿਣਤੀ | ਮੁੱਖ ਦਫ਼ਤਰ ਵੱਲੋਂ ਭੇਜੀ ਗਈ ਕੁੱਲ ਰਾਸ਼ੀ | ਖਰਚ ਕੀਤੀ ਰਾਸ਼ੀ | ਬਕਾਇਆ ਰਾਸ਼ੀ |
|---------|---------|--|-------------------------------------|----------------|-------------|
|         |         |  |                                     |                |             |
|         |         |  |                                     |                |             |

ਇਸ ਨੂੰ ਪਰਮ ਅਗੇਤ ਸਮਝਿਆ ਜਾਵੇ।

  
 ਡਾਇਰੈਕਟਰ ਜਨਰਲ ਸਕੂਲ ਸਿੱਖਿਆ -ਕਮ-  
 ਸਟੇਟ ਪ੍ਰੋਜੈਕਟ ਡਾਇਰੈਕਟਰ  
 ਸਮੱਗਰਾ ਸਿੱਖਿਆ ਅਭਿਆਨ ਅਥਾਰਟੀ  
 ਪੰਜਾਬ



| <b>JANG-e-AZADI MEMORIAL KARTARPUR</b>  |                                    |                     |                        |
|---|------------------------------------|---------------------|------------------------|
| <b>GOVT MIDDLE SCHOOL STUDENTS RECORD FROM 8th AUGUST 2018 TO 31st March 2019</b> |                                    |                     |                        |
| <b>DATE</b>   | <b>SCHOOL NAME</b>                 | <b>DISTRICT</b>     | <b>NO. OF STUDENTS</b> |
| <b>08-Aug-18</b>  | GOVT. MIDDLE SCHOOL (KAPURTHALA)   | KAPURTHALA          | 18                     |
|   | GOVT. MIDDLE SCHOOL (TARAN Taaran) | TARANTARAN          | 50                     |
|   | GOVT. MIDDLE SCHOOL (GHASITPUR)    | HOSHIARPUR          | 50                     |
|   | GOVT. MIDDLE SCHOOL (CHACHOWALI)   | Amritsar            | 44                     |
|   | GOVT. MIDDLE SCHOOL (TOTI)         | KAPURTHALA          | 82                     |
|   | GOVT. MIDDLE SCHOOL (SAIPUR)       | JALANDHAR           | 50                     |
|   | GOVT. MIDDLE SCHOOL (BAGGA)        | Amritsar            | 38                     |
|   | GOVT. MIDDLE SCHOOL (SHAMCHURASI)  | HOSHIARPUR          | 50                     |
|   | GOVT. MIDDLE SCHOOL (NOORPUR)      | JALANDHAR           | 45                     |
|   | GOVT. MIDDLE SCHOOL (KHUSHALPUR)   | HOSHIARPUR          | 51                     |
|   | GOVT. MIDDLE SCHOOL (NAWANSHER)    | NAWANSHER           | 102                    |
|   | GOVT. MIDDLE SCHOOL (HAMIRI KHERA) | JALANDHAR           | 51                     |
|   | <b>09-Aug-18</b>                   | G M S (SANGHARKALA) | Gurdaspur              |
| G M S ( BHATHE JALANDHAR)   |                                    | JALANDHAR           | 43                     |
| G M S (BIDHIPUR)  |                                    | JALANDHAR           | 50                     |
| G M S (MIRZAPUR)  |                                    | HOSHIARPUR          | 59                     |
| G M S (CHAINPUR BALGA)  |                                    | Amritsar            | 35                     |
| G M S (BALKGHURD)   |                                    | HOSHIARPUR          | 50                     |
| G M S (SARAIA)  |                                    | AMRITSAR            | 46                     |
| G M S (MUGLANI)   |                                    | JALANDHAR           | 50                     |
| G M S (HASANMULLA)  |                                    |                     | 50                     |
| G M S (SHEIKMANGA)  |                                    | HOSHIARPUR          | 44                     |
| G M S (SHABDULAPUR)   |                                    | KAPURTHALA          | 50                     |
| G M S H B TONSA   |                                    | NAWASHEHR           | 92                     |
| G M S ALOUR   |                                    | LUDHIANA            | 50                     |
| <b>10-Aug-18</b>  | GOVT MIDDLE SCHOOL , Baserke       |                     | 50                     |
|   | GOVT MIDDLE SCHOOL chakol Ajnala   | Amritsar            | 50                     |
|   | GOVT MIDDLE SCHOOL , Ghakewal      |                     | 49                     |
|   | GOVT MIDDLE SCHOOL                 | Nawansher           | 34                     |
|   | GOVT MIDDLE SCHOOL , Santokpura    |                     | 50                     |
|   | GOVT MIDDLE SCHOOL, Kangnwal       | Jalandhar           | 50                     |
|   | GOVT MIDDLE SCHOOL, Aloona Tola    | Ludhiana            | 27                     |
|   | GOVT MIDDLE SCHOOL, Begowal        |                     | 50                     |
|   | GOVT MIDDLE SCHOOL , Bamuwal       | Kapurthala          | 41                     |
|   | GOVT MIDDLE SCHOOL, Ramidi         |                     | 33                     |
|   | GOVT MIDDLE SCHOOL , Thotta        |                     | 48                     |
|   | GOVT MIDDLE SCHOOL, Chak Kre Khan  | Taran Taaran        | 50                     |

| <b>8th AUGUST 2018 TO 31st March 2019</b> |                        |
|---|------------------------|
| <b>DISTRICT</b>                           | <b>NO. OF STUDENTS</b> |
| <b>KAPURTHALA</b>                         | <b>4519</b>            |
| <b>TARANTARAN</b>                         | <b>3697</b>            |
| <b>NAWASHER</b>                           | <b>3117</b>            |
| <b>GURDASPUR</b>                          | <b>4373</b>            |
| <b>JALANDHAR</b>                          | <b>3791</b>            |
| <b>HOSHIARPUR</b>                         | <b>6263</b>            |
| <b>LUDHIANA</b>                           | <b>1631</b>            |
| <b>AMRITSAR</b>                           | <b>6069</b>            |
| <b>GRAND TOTAL</b>                        | <b>33460</b>           |

|                                       |  |                          |     |
|---------------------------------------|--|--------------------------|-----|
|                                       | GOVT MIDDLE SCHOOL , Badala            |                          | 50  |
|                                       | GOVT MIDDLE SCHOOL , Januari           | Hoshiarpur               | 49  |
|                                       | GOVT MIDDLE SCHOOL , Bal               | Gurdaspur                | 50  |
| 11-08-2018                            | GOVT MIDDLE SCHOOL                     | Amritsar                 | 50  |
|                                       | GOVT MIDDLE SCHOOL                     |                          | 39  |
|                                       | GOVT MIDDLE SCHOOL                     | Nawansher                | 50  |
|                                       | GOVT MIDDLE SCHOOL                     |                          | 50  |
|                                       | GOVT MIDDLE SCHOOL                     | Jalandhar                | 50  |
|                                       | GOVT MIDDLE SCHOOL                     |                          | 50  |
|                                       | GOVT MIDDLE SCHOOL                     | Ludhiana                 | 33  |
|                                       | GOVT MIDDLE SCHOOL                     | Kapurthala               | 100 |
|                                       | GOVT MIDDLE SCHOOL                     |                          | 50  |
|                                       | GOVT MIDDLE SCHOOL                     | Taran Taaran             | 21  |
|                                       | GOVT MIDDLE SCHOOL                     |                          | 50  |
|                                       | GOVT MIDDLE SCHOOL                     | Hoshiarpur               | 50  |
|                                       | 12-08-2018                             | GOVT MIDDLE SCHOOL , DEO |     |
| GOVT MIDDLE SCHOOL ,DINEWAL           |  | TARANTARAN               | 50  |
| GOVT MIDDLE SCHOOL ,BAULI             |  | AMRITSAR                 | 23  |
| GOVT MIDDLE SCHOOL ,CHATTI WIND LEHAL |  |                          | 50  |
| GOVT MIDDLE SCHOOL , SAYAN KALAN      |  | LUDHIANA                 | 50  |
| GOVT MIDDLE SCHOOL ,GOBINDPURA        |  | KAPURTHALA               | 84  |
| GOVT MIDDLE SCHOOL ,RAIPUR SPS NAGAR  |  | NAWANSHAHR               | 50  |
| GOVT MIDDLE SCHOOL , SIANA            |  |                          | 50  |
| GOVT MIDDLE SCHOOL , HARSIPIND        |  |                          | 50  |
| GOVT MIDDLE SCHOOL , NEELA NALOYA     |  | HOSHIARPUR               | 65  |
| GOVT MIDDLE SCHOOL ,MUNDICHUHLIAN     |  | JALANDHAR                | 100 |
| GOVT MIDDLE SCHOOL ,UDHIPUR           |  | GURDASPUR                | 50  |
| 13-08-2018                            | GOVT MIDDLE SCHOOL , RAISHIANAL        |                          | 47  |
|                                       | GOVT MIDDLE SCHOOL , PHEROWAL          | TARANTARAN               | 50  |
|                                       | GOVT MIDDLE SCHOOL ,CHHAPIANWAL        |                          | 50  |
|                                       | GOVT MIDDLE SCHOOL , BEDADPUR          | AMRITSAR                 | 27  |
|                                       | GOVT MIDDLE SCHOOL , SHEAIKH DAULAT    | LUDHIANA                 | 32  |
|                                       | GOVT MIDDLE SCHOOL ,DARWESH PIND       |                          | 47  |
|                                       | GOVT MIDDLE SCHOOL,RAWALPINDI          | KAPURTHALA               | 46  |
|                                       | GOVT MIDDLE SCHOOL ,THANDIAN           | NAWANSHAHR               | 50  |
|                                       | GOVT MIDDLE SCHOOL , BERCHHA           |                          | 50  |
|                                       | GOVT MIDDLE SCHOOL , GORSIAN KAWEN     | HOSHIARPUR               | 50  |
|                                       | GOVT MIDDLE SCHOOL ,KISHANGARH         |                          | 32  |
|                                       | GOVT MIDDLE SCHOOL ,BAL                | JALANDHAR                | 50  |
|                                       | GOVT MIDDLE SCHOOL ,DORANGLA           | GURDASPUR                | 50  |
|                                       | GOVT MIDDLE SCHOOL , BEHLA             |                          | 39  |
| 14-08-2018                            | GOVT MIDDLE SCHOOL , CHAK GILL         | TARANTARAN               | 50  |
|                                       | GOVT MIDDLE SCHOOL ,BEGE               |                          | 44  |
|                                       | GOVT MIDDLE SCHOOL , CHHIDAN           | AMRITSAR                 | 50  |
|                                       | GOVT MIDDLE SCHOOL , SEKHA             | LUDHIANA                 | 31  |
|                                       | GOVT MIDDLE SCHOOL , MANAWALI          |                          | 53  |
|                                       | GOVT MIDDLE SCHOOL ,JAGG               | KAPURTHALA               | 42  |
|                                       | GOVT MIDDLE SCHOOL ,THANDIAN SBS NAGAR |                          | 24  |
|                                       | GOVT MIDDLE SCHOOL , BHOOTAN SBS NAGAR | NAWANSHAHR               | 26  |
|                                       | GOVT MIDDLE SCHOOL ,SOTRAN SBS NAGAR   |                          | 47  |
|                                       | GOVT MIDDLE SCHOOL , HARKHOWAL         |                          | 50  |
| GOVT MIDDLE SCHOOL , KITNA            | HOSHIARPUR                             | 50                       |     |

|                                     |   |            |    |
|-------------------------------------|---|------------|----|
|                                     | GOVT MIDDLE SCHOOL ,USMANPUR COMPLEX KADIANWALI | JALANDHAR  | 50 |
|                                     | GOVT MIDDLE SCHOOL ,AVTAR NAGAR                 | JALANDHAR  | 50 |
|                                     | GOVT MIDDLE SCHOOL ,THATHA                      | GURDASPUR  | 50 |
| 15-08-2018                          | <b>INDEPENDENCE DAY</b>                         |            | 0  |
| 16-08-2018                          | GOVT MIDDLE SCHOOL ,CHOHAN                      | AMRITSAR   | 50 |
|                                     | GOVT MIDDLE SCHOOL , BHAINI                     |            | 50 |
|                                     | GOVT MIDDLE SCHOOL , PLAHI                      | KAPURTHALA | 50 |
|                                     | GOVT MIDDLE SCHOOL ,CHAHALKHURD SBS NAGAR       | NAWANSHAHR | 50 |
|                                     | GOVT MIDDLE SCHOOL ,MANGOOWAL                   |            | 50 |
|                                     | GOVT MIDDLE SCHOOL , JATTPUR                    | HOSHIARPUR | 50 |
|                                     | GOVT MIDDLE SCHOOL , KHANUORA                   |            | 50 |
|                                     | GOVT MIDDLE SCHOOL ,MALRI                       | JALANDHAR  | 50 |
|                                     | GOVT MIDDLE SCHOOL ,THAPALKE                    |            | 50 |
| GOVT MIDDLE SCHOOL ,PAHRA           | GURDASPUR                                       | 46         |    |
| 17-08-2018                          | GOVT MIDDLE SCHOOL ,THATH GARH                  | TARANTARAN | 50 |
|                                     | GOVT MIDDLE SCHOOL ,BHILAI PUR PURVAN           | AMRITSAR   | 35 |
|                                     | GOVT MIDDLE SCHOOL , CHOWNK BABA SAHIB          |            | 48 |
|                                     | GOVT MIDDLE SCHOOL ,PARVEZ NAGAR                | KAPURTHALA | 44 |
|                                     | GOVT MIDDLE SCHOOL ,HALLA                       | GURDASPUR  | 50 |
| 18-08-2018                          | GOVT MIDDLE SCHOOL , BAGHIARI                   | TARANTARAN | 51 |
|                                     | GOVT MIDDLE SCHOOL , MEHTA                      | AMRITSAR   | 34 |
|                                     | GOVT MIDDLE SCHOOL , BURARIWAL                  |            | 47 |
|                                     | GOVT MIDDLE SCHOOL , BAINS                      | LUDHIANA   | 46 |
|                                     | GOVT MIDDLE SCHOOL , NURPUR                     |            | 50 |
|                                     | GOVT MIDDLE SCHOOL , MAHUITPUR                  | KAPURTHALA | 48 |
|                                     | GOVT MIDDLE SCHOOL ,TADDE                       |            | 42 |
|                                     | GOVT MIDDLE SCHOOL , BAHROWAL SBS NAGAR         | NAWANSHAHR | 61 |
|                                     | GOVT MIDDLE SCHOOL , MAJARI SBS NAGAR           |            | 33 |
|                                     | GOVT MIDDLE SCHOOL , CHAKMIRPUR                 | HOSHIARPUR | 50 |
|                                     | GOVT MIDDLE SCHOOL , CHHANGLA (UMARPUR)         |            | 50 |
|                                     | GOVT MIDDLE SCHOOL , KANG ARAYIAN               | JALANDHAR  | 50 |
|                                     | GOVT MIDDLE SCHOOL ,NAWI AWADI                  | GURDASPUR  | 50 |
| 19-08-2018                          | GOVT MIDDLE SCHOOL , CHUTALA                    | TARANTARAN | 50 |
|                                     | GOVT MIDDLE SCHOOL , MANNAN                     |            | 50 |
|                                     | GOVT MIDDLE SCHOOL , DADDIAN                    | AMRITSAR   | 20 |
|                                     | GOVT MIDDLE SCHOOL ,BALION                      | LUDHIANA   | 50 |
|                                     | GOVT MIDDLE SCHOOL , GANDHWAN                   |            | 35 |
|                                     | GOVT MIDDLE SCHOOL , UCCHABET                   | KAPURTHALA | 50 |
|                                     | GOVT MIDDLE SCHOOL , JANDIALA                   |            | 36 |
|                                     | GOVT MIDDLE SCHOOL , HEON SBS NAGAR             | NAWANSHAHR | 50 |
|                                     | GOVT MIDDLE SCHOOL , JHARERIAN                  |            | 50 |
|                                     | GOVT MIDDLE SCHOOL , TERKIAN                    | HOSHIARPUR | 46 |
|                                     | GOVT MIDDLE SCHOOL , JANDE SARAI                |            | 50 |
|                                     | GOVT MIDDLE SCHOOL , AKARA                      | JALANDHAR  | 50 |
|                                     | GOVT MIDDLE SCHOOL ,RURKA KALAN                 |            | 28 |
|                                     | GOVT MIDDLE SCHOOL , BERI                       | GURDASPUR  | 50 |
|                                     | GOVT MIDDLE SCHOOL , DUGALWALA                  | TARANTARAN | 50 |
|                                     | GOVT MIDDLE SCHOOL , DBURJI                     |            | 50 |
| GOVT MIDDLE SCHOOL , PHILOWAL KACHA | AMRITSAR  | 50         |    |
| GOVT MIDDLE SCHOOL , DADUPURA       |   | 42         |    |
| GOVT MIDDLE SCHOOL , BAMB           | LUDHIANA  | 28         |    |

|                                     |  |                                   |            |    |
|-------------------------------------|--|-----------------------------------|------------|----|
| 20-08-2018                          | GOVT MIDDLE SCHOOL , MEHNDIPUR SBS NAGAR     | NAWANSHAHR                        | 65         |    |
|                                     | GOVT MIDDLE SCHOOL , KARIMPUR                |                                   | 26         |    |
|                                     | GOVT MIDDLE SCHOOL , HYATPUR                 | HOSHIARPUR                        | 50         |    |
|                                     | GOVT MIDDLE SCHOOL , KADIAN                  |                                   | 50         |    |
|                                     | GOVT MIDDLE SCHOOL , SHAHKOT BOYS            | JALANDHAR                         | 85         |    |
|                                     | GOVT MIDDLE SCHOOL , DHULETA                 |                                   | 50         |    |
| GOVT MIDDLE SCHOOL ,MAHAL GURAYAN-2 | 50   |                                   |            |    |
| 21-08-2018                          | GOVT MIDDLE SCHOOL , AGWAN                   | GURDASPUR                         | 50         |    |
|                                     | GOVT MIDDLE SCHOOL , MOHANPUR                | TARANTARAN                        | 50         |    |
|                                     | GOVT MIDDLE SCHOOL , RANIWALLAH              | AMRITSAR                          | 62         |    |
|                                     | GOVT MIDDLE SCHOOL , DAULO NANGAL            |                                   | 42         |    |
|                                     | GOVT MIDDLE SCHOOL , BHOEWALI                | LUDHIANA                          | 50         |    |
|                                     | GOVT MIDDLE SCHOOL , BARDEKE                 |                                   | 30         |    |
|                                     | GOVT MIDDLE SCHOOL , PARVEJ NAGAR            | KAPURTHALA                        | 8          |    |
|                                     | GOVT MIDDLE SCHOOL , MASEETAN                |                                   | 58         |    |
|                                     | GOVT MIDDLE SCHOOL , JHALLTHIKRIWAL          |                                   | 62         |    |
|                                     | GOVT MIDDLE SCHOOL , DOGRAWAL                |                                   | 38         |    |
|                                     | GOVT MIDDLE SCHOOL , BHANGAL KHURD SBS NAGAR |                                   | NAWANSHAHR | 64 |
|                                     | GOVT MIDDLE SCHOOL , MEERPUR LAKHA SBS NAGAR | HOSHIARPUR                        | 32         |    |
|                                     | GOVT MIDDLE SCHOOL , BASSI JANA              |                                   | 50         |    |
|                                     | GOVT MIDDLE SCHOOL , BHAMIAN                 | JALANDHAR                         | 48         |    |
|                                     | GOVT MIDDLE SCHOOL , LAMBRI                  |                                   | 44         |    |
|                                     | GOVT MIDDLE SCHOOL , SUBHANA                 |                                   | 50         |    |
|                                     | GOVT MIDDLE SCHOOL , KHERA                   |                                   | 45         |    |
|                                     | GOVT MIDDLE SCHOOL , LALLA SOHIA             |                                   | GURDASPUR  | 61 |
|                                     | 22-08-2018                                   | GOVT MIDDLE SCHOOL , DHADDE       | AMRITSAR   | 50 |
|                                     |  | GOVT MIDDLE SCHOOL , SABUWAL      | KAPURTHALA | 50 |
|                                     |  | GOVT MIDDLE SCHOOL , LOHAR NANGAL | JALANDHAR  | 60 |
| GOVT MIDDLE SCHOOL , MANDIALA       |  | GURDASPUR                         | 60         |    |
| 23-08-2018                          | GOVT MIDDLE SCHOOL ,MARGINDPURA              | TARANTARAN                        | 24         |    |
|                                     | GOVT MIDDLE SCHOOL ,MANIHALAJAISINGH         | AMRITSAR                          | 23         |    |
|                                     | GOVT MIDDLE SCHOOL , DHARAN                  |                                   | 50         |    |
|                                     | GOVT MIDDLE SCHOOL , BIRBARPURA              | LUDHIANA                          | 53         |    |
|                                     | GOVT MIDDLE SCHOOL , KAILASH NAGAR           |                                   | 50         |    |
|                                     | GOVT MIDDLE SCHOOL , MIANI BAKARPUR          | KAPURTHALA                        | 45         |    |
|                                     | GOVT MIDDLE SCHOOL ,BOOH                     |                                   | 50         |    |
|                                     | GOVT MIDDLE SCHOOL ,JHUGIAN GULAM KPT        |                                   | 30         |    |
|                                     | GOVT MIDDLE SCHOOL , NAROOR                  |                                   | 57         |    |
|                                     | GOVT MIDDLE SCHOOL , BHAGORAN SBS NAGAR      | NAWANSHAHR                        | 26         |    |
|                                     | GOVT MIDDLE SCHOOL , SAUNA SBS NAGAR         |                                   | 42         |    |
|                                     | GOVT MIDDLE SCHOOL , BARWA                   |                                   | 32         |    |
|                                     | GOVT MIDDLE SCHOOL ,PANKHUH                  | HOSHIARPUR                        | 45         |    |
|                                     | GOVT MIDDLE SCHOOL , SINGRIWALA              |                                   | 50         |    |
|                                     | GOVT MIDDLE SCHOOL , BASTIPEERDAD            | JALANDHAR                         | 125        |    |
|                                     | GOVT MIDDLE SCHOOL ,BATALA - 1               | GURDASPUR                         | 50         |    |
|                                     | GOVT MIDDLE SCHOOL , KHABBE DOGRAN           | TARANTARAN                        | 54         |    |
|                                     | GOVT MIDDLE SCHOOL , WARRIAN NEW             | AMRITSAR                          | 49         |    |
|                                     | GOVT MIDDLE SCHOOL , BOMLIAN                 |                                   | 43         |    |
|                                     | GOVT MIDDLE SCHOOL , KAILPUR BARIC           | LUDHIANA                          | 41         |    |
| GOVT MIDDLE SCHOOL , JAGPALPUR      | 38   |                                   |            |    |
|                                     | GOVT MIDDLE SCHOOL , DOMELI                  | KAPURTHALA                        | 34         |    |

|                                 |   |                              |            |
|---------------------------------|---|------------------------------|------------|
| 24-08-2018                      | GOVT MIDDLE SCHOOL, RAMPUR KHALYAN          |                              | 32         |
|                                 | GOVT MIDDLE SCHOOL, KAHLO SBS NAGAR         |                              | 25         |
|                                 | GOVT MIDDLE SCHOOL, KHARKUWAL SBS NAGAR     | NAWANSHAHR                   | 25         |
|                                 | GOVT MIDDLE SCHOOL, KHOJA SBS NAGAR         |                              | 26         |
|                                 | GOVT MIDDLE SCHOOL, KANG SBS NAGAR          |                              | 25         |
|                                 | GOVT MIDDLE SCHOOL, HARYANA                 | HOSHIARPUR                   | 61         |
|                                 | GOVT MIDDLE SCHOOL, THINDACHIPRA            |                              | 50         |
| 25-08-2018                      | GOVT MIDDLE SCHOOL, BAHMANIAN               | JALANDHAR                    | 87         |
|                                 | GOVT MIDDLE SCHOOL, JOHAL RAJU SINGH        | TARANTARAN                   | 50         |
|                                 | GOVT MIDDLE SCHOOL, BHURE GILL              |                              | 33         |
|                                 | GOVT MIDDLE SCHOOL, DHARMUCHAK              | AMRITSAR                     | 24         |
|                                 | GOVT MIDDLE SCHOOL, BOPARAI BAJISINGH       |                              | 36         |
|                                 | GOVT MIDDLE SCHOOL, KAKKA                   | LUDHIANA                     | 50         |
|                                 | GOVT MIDDLE SCHOOL, KHOJEWALA               | KAPURTHALA                   | 47         |
|                                 | GOVT MIDDLE SCHOOL, PADORIARIAN             |                              | 52         |
|                                 | GOVT MIDDLE SCHOOL, UCHALADHANA SBS NAGAR   |                              | 22         |
|                                 | GOVT MIDDLE SCHOOL, PADDI MATWALI SBS NAGAR | NAWANSHAHR                   | 28         |
|                                 | GOVT MIDDLE SCHOOL, BHAURA SBS NAGAR        |                              | 25         |
|                                 | GOVT MIDDLE SCHOOL, JABBOWAL SBS NAGAR      |                              | 25         |
|                                 | GOVT MIDDLE SCHOOL, DEPUR                   | HOSHIARPUR                   | 50         |
|                                 | GOVT MIDDLE SCHOOL, BHATOLIAN               |                              | 50         |
|                                 | GOVT MIDDLE SCHOOL, BHANGARA                | JALANDHAR                    | 45         |
| GOVT MIDDLE SCHOOL, GADRA       |   | 50                           |            |
| GOVT MIDDLE SCHOOL, KALYANPUR   | GURDASPUR                                   | 50                           |            |
| 26-08-2018                      |   |                              | 0          |
| 27-08-2018                      | GOVT MIDDLE SCHOOL, DARGAPUR                | TARANTARAN                   | 50         |
|                                 | GOVT MIDDLE SCHOOL, BHAILADHU               |                              | 50         |
|                                 | GOVT MIDDLE SCHOOL, DHERAKOT                | AMRITSAR                     | 46         |
|                                 | GOVT MIDDLE SCHOOL, BRAR                    |                              | 50         |
|                                 | GOVT MIDDLE SCHOOL, KALALMAJRA              | LUDHIANA                     | 42         |
|                                 | GOVT MIDDLE SCHOOL, HAMBOWAL                |                              | 29         |
|                                 | GOVT MIDDLE SCHOOL, SHAM NAGAR              |                              | 55         |
|                                 | GOVT MIDDLE SCHOOL, KARHALKALAN             | KAPURTHALA                   | 31         |
|                                 | GOVT MIDDLE SCHOOL, HUSAINPUR               |                              | 23         |
|                                 | GOVT MIDDLE SCHOOL, JATIKI                  |                              | 45         |
|                                 | GOVT MIDDLE SCHOOL, SAJAWALPUR SBS NAGAR    |                              | 14         |
|                                 | GOVT MIDDLE SCHOOL, JAINPUR SBS NAGAR       | NAWANSHAHR                   | 33         |
|                                 | GOVT MIDDLE SCHOOL, SAHDHRA SBS NAGAR       |                              | 36         |
|                                 | GOVT MIDDLE SCHOOL, KATWARA KALAN SBS NAGAR |                              | 14         |
|                                 | GOVT MIDDLE SCHOOL, KALRA                   | HOSHIARPUR                   | 47         |
|                                 | GOVT MIDDLE SCHOOL, MASTIWAL                |                              | 50         |
|                                 | GOVT MIDDLE SCHOOL, RAJPUR                  | JALANDHAR                    | 50         |
|                                 | GOVT MIDDLE SCHOOL, LOHARAN CHARKEY         |                              | 48         |
|                                 | GOVT MIDDLE SCHOOL, MAGRALA                 | GURDASPUR                    | 50         |
|                                 |   | GOVT MIDDLE SCHOOL, DHARIWAL | TARANTARAN |
| GOVT MIDDLE SCHOOL, SIDHMA      |   |                              | 50         |
| GOVT MIDDLE SCHOOL, BUANANGALI  |   |                              | 42         |
| GOVT MIDDLE SCHOOL, BHATTIKE    |   | AMRITSAR                     | 50         |
| GOVT MIDDLE SCHOOL, DYALPURA    |   |                              | 46         |
| GOVT MIDDLE SCHOOL, KANECH      |   | LUDHIANA                     | 50         |
| GOVT MIDDLE SCHOOL, KARAMJITPUR |   |                              | 17         |

|                                      |   |                             |           |
|--------------------------------------|---|-----------------------------|-----------|
| 28-08-2018                           | GOVT MIDDLE SCHOOL, SANGATPUR                   | KAPURTHALA                  | 25        |
|                                      | GOVT MIDDLE SCHOOL, DERA SAIDAN                 |                             | 69        |
|                                      | GOVT MIDDLE SCHOOL, DYAL SBS NAGAR              |                             | 18        |
|                                      | GOVT MIDDLE SCHOOL, ALOWAL SBS NAGAR            | NAWANSHAHR                  | 17        |
|                                      | GOVT MIDDLE SCHOOL, SAHUNGRA SBS NAGAR          |                             | 16        |
|                                      | GOVT MIDDLE SCHOOL, PANDORI SUMLAN              |                             | 50        |
|                                      | GOVT MIDDLE SCHOOL, JALOTA                      | HOSHIARPUR                  | 50        |
|                                      | GOVT MIDDLE SCHOOL, KHAMBRA                     |                             | 50        |
|                                      | GOVT MIDDLE SCHOOL, LOHARAN                     | JALANDHAR                   | 50        |
| 29-08-2018                           | GOVT MIDDLE SCHOOL, SULTANI                     |                             | 44        |
|                                      | GOVT MIDDLE SCHOOL, CHUHARWAL                   | GURDASPUR                   | 50        |
| 30-08-2018                           | GOVT MIDDLE SCHOOL, TATLE                       | KAPURTHALA                  | 54        |
|                                      | GOVT MIDDLE SCHOOL, POONIA                      | TARANTARAN                  | 50        |
|                                      | GOVT MIDDLE SCHOOL, BULENANGAL                  |                             | 45        |
|                                      | GOVT MIDDLE SCHOOL, DUJJOWAL                    | AMRITSAR                    | 22        |
|                                      | GOVT MIDDLE SCHOOL, KAURI KHANNA                |                             | 50        |
|                                      | GOVT MIDDLE SCHOOL, JAMALPUR                    | LUDHIANA                    | 50        |
|                                      | GOVT MIDDLE SCHOOL, ASRON SBSNAGAR              | KAPURTHALA                  | 75        |
|                                      | GOVT MIDDLE SCHOOL, HEDONDET SBS NAGAR          |                             | 25        |
|                                      | GOVT MIDDLE SCHOOL, PARAGPUR SBS NAGAR          | NAWANSHAHR                  | 25        |
|                                      | GOVT MIDDLE SCHOOL, FATEHPUR SRS NAGAR          |                             | 22        |
|                                      | GOVT MIDDLE SCHOOL, KAINTHAN                    |                             | 25        |
|                                      | GOVT MIDDLE SCHOOL, GILL                        | HOSHIARPUR                  | 96        |
|                                      | GOVT MIDDLE SCHOOL, KOHALA                      | JALANDHAR                   | 50        |
|                                      | GOVT MIDDLE SCHOOL, AUJLA                       |                             | 50        |
|                                      | 31-08-2018                                      | GOVT MIDDLE SCHOOL, PANGOTA | GURDASPUR |
| GOVT MIDDLE SCHOOL, LATHUPUR TODA    |   | TARANTARAN                  | 50        |
| GOVT MIDDLE SCHOOL, BUTARI           |   |                             | 44        |
| GOVT MIDDLE SCHOOL, EAST MOHAN NAGAR |   | AMRITSAR                    | 50        |
| GOVT MIDDLE SCHOOL, KHANNA KHURD     |   |                             | 50        |
| GOVT MIDDLE SCHOOL, MANAK            |   | LUDHIANA                    | 50        |
| GOVT MIDDLE SCHOOL, BHAMBUTARHAR     |   | KAPURTHALA                  | 18        |
| GOVT MIDDLE SCHOOL, USMAN SHAHID     |   | HOSHIARPUR                  | 50        |
| GOVT MIDDLE SCHOOL, BASTIDANISHMANDI |   |                             | 50        |
| GOVT MIDDLE SCHOOL, PANIAR           |   | JALANDHAR                   | 99        |
| GOVT MIDDLE SCHOOL, JEOBALA          |   | GURDASPUR                   | 50        |
| 01-09-2018                           | GOVT MIDDLE SCHOOL, BHUCHARKHURD                | TARANTARAN                  | 49        |
|                                      | GOVT MIDDLE SCHOOL, GALIB RANSINGH              |                             | 43        |
|                                      | GOVT MIDDLE SCHOOL, BHUMAL                      | LUDHIANA                    | 43        |
|                                      | GOVT MIDDLE SCHOOL, MADHOPUR                    |                             | 41        |
|                                      | GOVT MIDDLE SCHOOL, TALWANDI MEHMAN             | KAPURTHALA                  | 33        |
|                                      | GOVT MIDDLE SCHOOL, BARIOVAL                    |                             | 59        |
|                                      | GOVT MIDDLE SCHOOL, NIKKIWALLEHAL (KOTHEJATTAN) | HOSHIARPUR                  | 48        |
| 02-09-2018                           | GOVT MIDDLE SCHOOL, SAIDPUR                     |                             | 50        |
|                                      | GOVT MIDDLE SCHOOL, KAKOWAKL                    | TARANTARAN                  | 38        |
|                                      | GOVT MIDDLE SCHOOL, GOH                         |                             | 50        |
|                                      | GOVT MIDDLE SCHOOL, TUANULI                     | LUDHIANA                    | 43        |
|                                      | GOVT MIDDLE SCHOOL, PADORI BAWA DASS            | HOSHIARPUR                  | 50        |
| 03-09-2018                           | GOVT MIDDLE SCHOOL, NAVIPUR                     |                             | 50        |
|                                      | GOVT MIDDLE SCHOOL, MAJRI                       | GURDASPUR                   | 50        |
|                                      | GOVT MIDDLE SCHOOL, CHANGBASOYA                 | LUDHIANA                    | 42        |
|                                      |   | HOSHIARPUR                  | 50        |



|  |                                      |                                      |            |    |
|--|--------------------------------------|--------------------------------------|------------|----|
| 04-09-2018                               | GOVT MIDDLE SCHOOL, DHAKKI           | HOSHIARPUR                           | 50         |    |
|  | GOVT MIDDLE SCHOOL, AHMEDPUR         | TARANTARAN                           | 50         |    |
|  | GOVT MIDDLE SCHOOL, AKBARPURA        |                                      | 50         |    |
|  | GOVT MIDDLE SCHOOL, SAWADDI KHURD    | LUDHIANA                             | 45         |    |
|  | GOVT MIDDLE SCHOOL, MALAKHPUR BET    |                                      | 50         |    |
|  | GOVT MIDDLE SCHOOL, SEICH            | KAPURTHALA                           | 62         |    |
|  | GOVT MIDDLE SCHOOL, DEEPEWAL         |                                      | 31         |    |
|  | GOVT MIDDLE SCHOOL, MEHAR BHATOLI    |                                      | 43         |    |
|  | GOVT MIDDLE SCHOOL, DADYAL           | HOSHIARPUR                           | 50         |    |
|  | GOVT MIDDLE SCHOOL, RCF              |                                      | 34         |    |
|  | GOVT MIDDLE SCHOOL, RURKA KHURD      | JALANDHAR                            | 50         |    |
|  | GOVT MIDDLE SCHOOL, SAMRARI          |                                      | 50         |    |
|  | GOVT MIDDLE SCHOOL, DHAROCHAK        | GURDASPUR                            | 50         |    |
| 05-09-2018                               | GOVT MIDDLE SCHOOL, MARIGOUR         | TARANTARAN                           | 50         |    |
|  | GOVT MIDDLE SCHOOL, MANAKPURA        |                                      | 50         |    |
|  | GOVT MIDDLE SCHOOL, MALDDAUD         | LUDHIANA                             | 14         |    |
|  | GOVT MIDDLE SCHOOL, ISHARWAL         |                                      | 11         |    |
|  | GOVT MIDDLE SCHOOL, DURGAPUR         | KAPURTHALA                           | 18         |    |
|  | GOVT MIDDLE SCHOOL, FARID SARAIN     |                                      | 40         |    |
|  | GOVT MIDDLE SCHOOL, MARIPUR          |                                      | 17         |    |
|  | GOVT MIDDLE SCHOOL, JASSOWAL         | HOSHIARPUR                           | 44         |    |
|  | GOVT MIDDLE SCHOOL, SAMUNDRA         |                                      | 44         |    |
|  | GOVT MIDDLE SCHOOL, KIRTI NAGAR      | JALANDHAR                            | 44         |    |
|  | GOVT MIDDLE SCHOOL, KODLI GAZRAN     |                                      | 47         |    |
|  | GOVT MIDDLE SCHOOL, SALLOCHAHAL      | GURDASPUR                            | 50         |    |
|  | 06-09-2018                           | GOVT MIDDLE SCHOOL, BHULLAR          | AMRITSAR   | 39 |
| GOVT MIDDLE SCHOOL, MANGEWAL             |                                      | LUDHIANA                             | 50         |    |
| GOVT MIDDLE SCHOOL, MANGAT               |                                      |                                      | 50         |    |
| GOVT MIDDLE SCHOOL, MURAR                |                                      |                                      | 55         |    |
| GOVT MIDDLE SCHOOL, BHAKHRIAN            |                                      |                                      | 44         |    |
| GOVT MIDDLE SCHOOL, MANGUPUR             |                                      | NAWANSHAHR                           | 50         |    |
| GOVT MIDDLE SCHOOL, KULAM                |                                      |                                      | 47         |    |
| GOVT MIDDLE SCHOOL, KHANPUR              |                                      | HOSHIARPUR                           | 34         |    |
| GOVT MIDDLE SCHOOL, SATNAUR              |                                      |                                      | 50         |    |
| GOVT MIDDLE SCHOOL, HUSAINPUR            |                                      | JALANDHAR                            | 50         |    |
| GOVT MIDDLE SCHOOL, SAMRAI CAMP GHARKIAN |                                      | GURDASPUR                            | 50         |    |
| 07-09-2018                               |                                      | GOVT MIDDLE SCHOOL, THITHA           | TARANTARAN | 50 |
|  |                                      | GOVT MIDDLE SCHOOL, FATEHGARH SIVIAN | LUDHIANA   | 32 |
|  | GOVT MIDDLE SCHOOL, KABIRPUR         | KAPURTHALA                           | 42         |    |
|  | GOVT MIDDLE SCHOOL, ALAUDIPUR        |                                      | 50         |    |
|  | GOVT MIDDLE SCHOOL, BAIN SBS, NAGAR  | NAWANSHAHR                           | 50         |    |
|  | GOVT MIDDLE SCHOOL, SUJJON SBS NAGAR |                                      | 39         |    |
|  | GOVT MIDDLE SCHOOL, ALLOWAL          | HOSHIARPUR                           | 40         |    |
|  | GOVT MIDDLE SCHOOL, AMONANGAL        |                                      | 50         |    |
|  | GOVT MIDDLE SCHOOL, HARUWAL          | GURDASPUR                            | 49         |    |
| 8-09-2018 TO<br>22-09-2018               | STUDENTS NOT VISITED                 |                                      | 0          |    |
| 23-09-2018                               | GOVT MIDDLE SCHOOL, PANDORI BAINSAN  | GURDASPUR                            | 50         |    |
| 24-09-2018 TO<br>27-09-2019              | STUDENTS NOT VISITED                 |                                      | 0          |    |

|   |   |                               |          |
|---|---|-------------------------------|----------|
| 28-09-2018                                  | GOVT MIDDLE SCHOOL , KALANOR                        | GURDASPUR                     | 52       |
| 29-09-2018 TO<br>6-10-2018                  | STUDENTS NOT VISITED                                |                               | 0        |
| 07-10-2018                                  | GOVT MIDDLE SCHOOL ,BAHADARPUR                      | HOSHIARPUR                    | 50       |
|   | GOVT MIDDLE SCHOOL ,BASSINAU                        |                               | 50       |
|   | GOVT MIDDLE SCHOOL ,BADALA                          |                               | 50       |
| 08-10-2018                                  | GOVT MIDDLE SCHOOL , HARMOYA                        | HOSHIARPUR                    | 50       |
|   | GOVT MIDDLE SCHOOL , CHHAUNI KALAN                  |                               | 50       |
|   | GOVT MIDDLE SCHOOL , SASOLI HOSHIARPUR              |                               | 50       |
| 09-10-2018                                  | GOVT MIDDLE SCHOOL , BORE                           | LUDHIANA                      | 52       |
|   | GOVT MIDDLE SCHOOL , CHAKHAKIM                      | KAPURTHALA                    | 56       |
|   | GOVT MIDDLE SCHOOL , INDERPUR                       |                               | 78       |
|   | GOVT MIDDLE SCHOOL , PAILI                          | NAWANSHAHR                    | 19       |
|   | GOVT MIDDLE SCHOOL , SBS NAGAR                      |                               | 30       |
|   | GOVT MIDDLE SCHOOL , DALLEWAL                       | HOSHIARPUR                    | 50       |
|   | GOVT MIDDLE SCHOOL , PANDORIBIBI                    |                               | 115      |
|   | GOVT MIDDLE SCHOOL , BHAMBOI                        | GURDASPUR                     | 51       |
|   | GOVT MIDDLE SCHOOL , BAHADURHUSSAIN                 |                               | 35       |
|   | GOVT MIDDLE SCHOOL , KHATIB                         |                               | 50       |
|   | GOVT MIDDLE SCHOOL , BAJUMAAN                       |                               | 48       |
| 10-10-2018                                  | GOVT MIDDLE SCHOOL , LOHARKAKALAN                   | AMRITSAR                      | 50       |
|   | GOVT MIDDLE SCHOOL , BUDHEWAL                       | LUDHIANA                      | 50       |
|   | GOVT MIDDLE SCHOOL , VILLAKOTI                      | KAPURTHALA                    | 58       |
|   | GOVT MIDDLE SCHOOL , KARIMPUR CHAHWANA SBS<br>NAGAR | NAWANSHAHR                    | 22       |
|   | GOVT MIDDLE SCHOOL , KARIMPUR DHIANI SBS NAGAR      |                               | 28       |
|   | GOVT MIDDLE SCHOOL , TALWANDI JATTAN                | HOSHIARPUR                    | 40       |
|   | GOVT MIDDLE SCHOOL , CHAK GUJJARAN                  |                               | 50       |
|   | GOVT MIDDLE SCHOOL , KULLIAN                        |                               | 50       |
|   | GOVT MIDDLE SCHOOL , SHIKARMAIAN                    | GURDASPUR                     | 37       |
|   | GOVT MIDDLE SCHOOL , SHEHZADA                       |                               | 48       |
| 11-10-2018                                  | GOVT MIDDLE SCHOOL , ANNGARH                        | AMRITSAR                      | 85       |
|   | GOVT MIDDLE SCHOOL , KAONKE                         |                               | 50       |
|   |   | LUDHIANA                      | 0        |
|   | GOVT MIDDLE SCHOOL , SARAI JATTAN                   | KAPURTHALA                    | 48       |
|   | GOVT MIDDLE SCHOOL , BHAVIANA                       |                               | 47       |
|   | GOVT MIDDLE SCHOOL , ADOANA SBS NAGAR               | NAWANSHAHR                    | 34       |
|   | GOVT MIDDLE SCHOOL , PADDI KHUTI                    | HOSHIARPUR                    | 49       |
|   |   | JALANDHAR                     | 0        |
|   | GOVT MIDDLE SCHOOL , JOGOWAL BEDIAN                 | GURDASPUR                     | 50       |
|   | GOVT MIDDLE SCHOOL , DADWAN                         |                               | 46       |
|   | 12-10-2018  | GOVT MIDDLE SCHOOL , PATALPUR | AMRITSAR |
| GOVT MIDDLE SCHOOL , MEERE                  |   | KAPURTHALA                    | 18       |
| GOVT MIDDLE SCHOOL , KARLWAN                |   |                               | 68       |
| GOVT MIDDLE SCHOOL , BELA TAJOWAN SBS NAGAR |   | NAWANSHAHR                    | 32       |
| GOVT MIDDLE SCHOOL , BALLOWAL SBS NAGAR     |   |                               | 26       |
| GOVT MIDDLE SCHOOL , BAIRSIAN SBS NAGAR     |   |                               | 40       |
| GOVT MIDDLE SCHOOL , SALERAN                |   |                               | 45       |
| GOVT MIDDLE SCHOOL , JIAN                   |   | HOSHIARPUR                    | 27       |

|  |   |                                |          |
|--|---|--------------------------------|----------|
|  | GOVT MIDDLE SCHOOL , GHASIPUR               |                                | 48       |
|  | GOVT MIDDLE SCHOOL , KANDIAL                |                                | 50       |
|  | GOVT MIDDLE SCHOOL , DHEER                  | GURDASPUR                      | 48       |
| 13-10-2018                                 | GOVT MIDDLE SCHOOL , KHAIRANBAD             | AMRITSAR                       | 150      |
|  | GOVT MIDDLE SCHOOL , MALIKPUR               |                                | 39       |
|  | GOVT MIDDLE SCHOOL , MEHMADPUR              | KAPURTHALA                     | 35       |
|  | GOVT MIDDLE SCHOOL , HARDASPUR              |                                | 27       |
|  | GOVT MIDDLE SCHOOL , NARANGSHAH             |                                | 37       |
|  | GOVT MIDDLE SCHOOL , BULLEWAL SBS NAGAR     |                                | 40       |
|  | GOVT MIDDLE SCHOOL , MAZZAPHARPUR SBS NAGAR | NAWANSHAHR                     | 34       |
|  | GOVT MIDDLE SCHOOL , BHALLA BET SBS NAGAR   |                                | 23       |
|  | GOVT MIDDLE SCHOOL , KANGNA BET SBS NAGAR   |                                | 32       |
|  | GOVT MIDDLE SCHOOL , GUJARPURA              | GURDASPUR                      | 50       |
|  | GOVT MIDDLE SCHOOL , NIKKO SARAI            |                                | 50       |
|  | 14-10-2018                                  | GOVT MIDDLE SCHOOL , ISLAMABAD | AMRITSAR |
| GOVT MIDDLE SCHOOL , GALIMO CHAIN          |   |                                | 24       |
| GOVT MIDDLE SCHOOL , GOSAL                 |   | LUDHIANA                       | 26       |
| GOVT MIDDLE SCHOOL , JANIAN SBS NAGAR      |   | NAWANSHAHR                     | 30       |
| GOVT MIDDLE SCHOOL , CHAKLISUJAT SBS NAGAR |   |                                | 27       |
| GOVT MIDDLE SCHOOL , HALER JALWARA         |   | HOSHIARPUR                     | 48       |
| GOVT MIDDLE SCHOOL , DALLEWAL              |   | JALANDHAR                      | 21       |
| GOVT MIDDLE SCHOOL , DOSANJH KHURD         |   |                                | 33       |
| GOVT MIDDLE SCHOOL , DEEDA SAINIAN         |   |                                | 50       |
| GOVT MIDDLE SCHOOL , JHANDE CHACK          |   | GURDASPUR                      | 46       |
| GOVT MIDDLE SCHOOL , ISLAMPUR              |   |                                | 50       |
| GOVT MIDDLE SCHOOL , DABURGI SHAM SINGH    |   |                                | 50       |
| 15-10-2018                                 | GOVT MIDDLE SCHOOL , HARARKALAN             | AMRITSAR                       | 85       |
|  | GOVT MIDDLE SCHOOL , CENTRAL WORKSHOP       |                                | 43       |
|  | GOVT MIDDLE SCHOOL , GURUSAR KONKE          | LUDHIANA                       | 50       |
|  | GOVT MIDDLE SCHOOL , JAID                   |                                | 25       |
|  | GOVT MIDDLE SCHOOL , AWAN                   |                                | 33       |
|  | GOVT MIDDLE SCHOOL , DAUDPUR MIRZAPUR       | KAPURTHALA                     | 31       |
|  | GOVT MIDDLE SCHOOL , TALWANDI KUKA          |                                | 31       |
|  | GOVT MIDDLE SCHOOL , BAGWANPUR              |                                | 20       |
|  | GOVT MIDDLE SCHOOL , RAMPUR                 |                                | 23       |
|  | GOVT MIDDLE SCHOOL , BASHESHARPUR           | JALANDHAR                      | 22       |
|  | GOVT MIDDLE SCHOOL , LALLIAN KHURD          |                                | 41       |
|  | GOVT MIDDLE SCHOOL , KHEHRA                 |                                | 34       |
| GOVT MIDDLE SCHOOL , GANJA                 | GURDASPUR                                   | 50                             |          |
| GOVT MIDDLE SCHOOL , DODWAN                |   | 38                             |          |
| 16-10-2018                                 | GOVT MIDDLE SCHOOL , PADDEVET               | KAPURTHALA                     | 19       |
|  | GOVT MIDDLE SCHOOL , KHANPUR MUKERIAN 1     | HOSHIARPUR                     | 40       |
|  | GOVT MIDDLE SCHOOL , CHAKRAJU SINGH         |                                | 44       |
|  | GOVT MIDDLE SCHOOL , NAWAN PIND BAHADUR     |                                | 50       |
|  | GOVT MIDDLE SCHOOL , DHARIWAL KHICHIAN      | GURDASPUR                      | 50       |
|  | GOVT MIDDLE SCHOOL , LODHI NANGAL           |                                | 49       |
| GOVT MIDDLE SCHOOL , BIRK TALWANDI         |   | 44                             |          |
| GOVT MIDDLE SCHOOL , GOPALNAGAR            |   | 100                            |          |
| GOVT MIDDLE SCHOOL , FATTUBHILLA           | AMRITSAR                                    | 50                             |          |
| GOVT MIDDLE SCHOOL , GUMTALA               |   | 126                            |          |
| GOVT MIDDLE SCHOOL , SHATAB GARH           |   | 25                             |          |
| GOVT MIDDLE SCHOOL , WATTAWALI             |   | 19                             |          |

|  |  |            |     |
|--|--|------------|-----|
| 17-10-2018                               | GOVT MIDDLE SCHOOL , DANDPUR                   | KAPURTHALA | 19  |
|  | GOVT MIDDLE SCHOOL ,MAND KHIJARPUR             |            | 34  |
|  | GOVT MIDDLE SCHOOL , TOGANWANA                 |            | 39  |
|  | GOVT MIDDLE SCHOOL , SHALLAPUR BET             |            | 26  |
|  | GOVT MIDDLE SCHOOL , NOORPUR JATTAN            |            | 27  |
|  | GOVT MIDDLE SCHOOL , BURJ TEHAN DASS SBS NAGAR | NAWANSHAHR | 39  |
|  | GOVT MIDDLE SCHOOL , JULAH MAJRA SBS NAGAR     |            | 25  |
|  | GOVT MIDDLE SCHOOL , LAKHPUR                   |            | 20  |
|  | GOVT MIDDLE SCHOOL , BUDHOBARKAT,              |            | 31  |
|  | GOVT MIDDLE SCHOOL , NAINWAN                   | HOSHIARPUR | 40  |
|  | GOVT MIDDLE SCHOOL , JALLOWAL                  |            | 36  |
|  | GOVT MIDDLE SCHOOL , BADALA                    |            | 37  |
|  | GOVT MIDDLE SCHOOL , ROJA SEHFAI REHMAN        | JALANDHAR  | 36  |
|  | GOVT MIDDLE SCHOOL , SAROBAD                   |            | 50  |
|  | GOVT MIDDLE SCHOOL , HAKEEMPUR                 | GURDASPUR  | 45  |
|  | GOVT MIDDLE SCHOOL , AMARKOT                   |            | 26  |
|  | GOVT MIDDLE SCHOOL , HAMRAJPUR                 |            | 50  |
| GOVT MIDDLE SCHOOL , MUSTFABAD           | 34   |            |     |
| GOVT MIDDLE SCHOOL , CHOPRA              | 44   |            |     |
| GOVT MIDDLE SCHOOL , LOHARKA KHURD       | AMRITSAR                                       |            | 50  |
| GOVT MIDDLE SCHOOL , NESHTA ATTARI BLOCK |  |            | 37  |
| GOVT MIDDLE SCHOOL , BOPARAI KHURD       |  | 50         |     |
| GOVT MIDDLE SCHOOL , PARWA               | KAPURTHALA                                     | 25         |     |
| GOVT MIDDLE SCHOOL , VISHANPUR JATTAN    |  | 27         |     |
| GOVT MIDDLE SCHOOL , DUGGAN              |  | 25         |     |
| GOVT MIDDLE SCHOOL , BHATNURA KALAN      |  | 25         |     |
| GOVT MIDDLE SCHOOL , BAJAJ               |  | 22         |     |
| GOVT MIDDLE SCHOOL , CHAIRH              |  | 15         |     |
| GOVT MIDDLE SCHOOL , KHANPUR             | NAWANSHAHR                                     | 25         |     |
| GOVT MIDDLE SCHOOL , KHURD SBS NAGAR     |  | 25         |     |
| GOVT MIDDLE SCHOOL , KATHGARH SBS NAGAR  | HOSHIARPUR                                     | 40         |     |
| GOVT MIDDLE SCHOOL , BHOOLPUR            |  | 40         |     |
| GOVT MIDDLE SCHOOL , NANAKPINDI          | JALANDHAR                                      | 24         |     |
| GOVT MIDDLE SCHOOL , CHITTEWANI          |  | 30         |     |
| GOVT MIDDLE SCHOOL , KHERA               |  | 30         |     |
| GOVT MIDDLE SCHOOL , HAMBOWAL            | GURDASPUR                                      | 50         |     |
| GOVT MIDDLE SCHOOL , KALANPUR            |  | 50         |     |
| GOVT MIDDLE SCHOOL , KOT YOGRAJ          |  | 40         |     |
| GOVT MIDDLE SCHOOL , CHAWA               |  | 50         |     |
| 19-10-2018                               | <b>STUDENTS NOT VISITED</b>                    |            | 0   |
| 20-10-2018                               | GOVT MIDDLE SCHOOL , GURUNANAK PURA            | AMRITSAR   | 144 |
|  | GOVT MIDDLE SCHOOL , MALAKPUR                  |            | 50  |
|  | GOVT MIDDLE SCHOOL , MASHIWAL                  |            | 44  |
|  | GOVT MIDDLE SCHOOL , GHAMNEWAL                 | LUDHIANA   | 50  |
|  | GOVT MIDDLE SCHOOL , WARIAN DONA               | KAPURTHALA | 27  |
|  | GOVT MIDDLE SCHOOL , TAHLIWAL                  | HOSHIARPUR | 33  |
|  | GOVT MIDDLE SCHOOL , UNCHI BASSI               |            | 29  |
|  | GOVT MIDDLE SCHOOL , GARHWIWALA                |            | 27  |
|  | GOVT MIDDLE SCHOOL , KHERA KOTLI               | GURDASPUR  | 46  |
|  | GOVT MIDDLE SCHOOL , BAJEER BHULLAR            | AMRITSAR   | 50  |
| GOVT MIDDLE SCHOOL , TOLANANGAL          | 50   |            |     |

|   |   |                                      |            |     |
|---|---|--------------------------------------|------------|-----|
| 21-10-2018                                | GOVT MIDDLE SCHOOL , VANIEKE                |                                      | 50         |     |
|   | GOVT MIDDLE SCHOOL , CHOMON                 | LUDHIANA                             | 31         |     |
|   | GOVT MIDDLE SCHOOL , PANIALI                | NAWANSHAHR                           | 45         |     |
|   | GOVT MIDDLE SCHOOL , NOORPUR                |                                      | 29         |     |
|   | GOVT MIDDLE SCHOOL , PANDRAWAL              |                                      | 29         |     |
|   | GOVT MIDDLE SCHOOL , HAJIPUR                | HOSHIARPUR                           | 44         |     |
|   | GOVT MIDDLE SCHOOL , KUNAILBLOCK GARSHANKAR |                                      | 34         |     |
|   | GOVT MIDDLE SCHOOL , DALLEWAL               |                                      | 32         |     |
|   | GOVT MIDDLE SCHOOL , MANOHARPUR             |                                      | 34         |     |
|   | GOVT MIDDLE SCHOOL , DHARIWAL               | GURDASPUR                            | 45         |     |
|   | GOVT MIDDLE SCHOOL , PEJOCHAK               |                                      | 42         |     |
|   | GOVT MIDDLE SCHOOL , MATHOLA                |                                      | 50         |     |
|   | GOVT MIDDLE SCHOOL ,SACHANDER               |                                      |            | 50  |
| 22-10-2018                                | GOVT MIDDLE SCHOOL , JAGDEV KALAN           | AMRITSAR                             | 50         |     |
|   | GOVT MIDDLE SCHOOL ,SUFFIAN                 |                                      | 42         |     |
|   | GOVT MIDDLE SCHOOL ,RAMPURA                 |                                      | 47         |     |
|   | GOVT MIDDLE SCHOOL ,HOSHIAR NAGAR           |                                      | 42         |     |
|   | GOVT MIDDLE SCHOOL , NASIREWAL              |                                      | 8          |     |
|   | GOVT MIDDLE SCHOOL ,JABBOSUDHAR             | KAPURTHALA                           | 23         |     |
|   | GOVT MIDDLE SCHOOL , KALRG                  |                                      | 19         |     |
|   | GOVT MIDDLE SCHOOL ,DAULA                   |                                      | 23         |     |
|   | GOVT MIDDLE SCHOOL ,SHERPURDONA             |                                      | 14         |     |
|   | GOVT MIDDLE SCHOOL ,PANDORI JAGIR           |                                      | 19         |     |
|   | GOVT MIDDLE SCHOOL , BHET                   |                                      | 21         |     |
|   | GOVT MIDDLE SCHOOL ,PUNNUMAZARA SBS NAGAR   |                                      | NAWANSHAHR | 29  |
|   | GOVT MIDDLE SCHOOL ,KANGANIWAL SBS NAGAR    |                                      |            | 18  |
|   | GOVT MIDDLE SCHOOL ,RAKRAN VET SBS NAGAR    |                                      |            | 35  |
|   | GOVT MIDDLE SCHOOL ,RAUPUR DABBA SBS NAGAR  |                                      |            | 24  |
|   | GOVT MIDDLE SCHOOL ,BAJON SBS NAGAR         | 18                                   |            |     |
|   | GOVT MIDDLE SCHOOL ,MEHMADWAL               | HOSHIARPUR                           | 36         |     |
|   | GOVT MIDDLE SCHOOL ,MUKHLIANA               |                                      | 24         |     |
|   | GOVT MIDDLE SCHOOL , YUSAFPUR DAREWAL       | JALANDHAR                            | 50         |     |
|   | GOVT MIDDLE SCHOOL , SABUWAL LOIYAN KHAS    |                                      | 33         |     |
|   | GOVT MIDDLE SCHOOL ,MANGUWAL                |                                      | 48         |     |
|   | GOVT MIDDLE SCHOOL ,MALAKPUR                | GURDASPUR                            | 41         |     |
|   | GOVT MIDDLE SCHOOL ,HASSANPUR SINGOWAL      |                                      | 50         |     |
|   | GOVT MIDDLE SCHOOL , BHARIAL                |                                      | 44         |     |
|   | 23-10-2018                                  | GOVT MIDDLE SCHOOL , KAMBO DHAIWALA  | TARANTARAN | 44  |
|   |   | GOVT MIDDLE SCHOOL , JALLUPURKHERA   | AMRITSAR   | 48  |
|   |   | GOVT MIDDLE SCHOOL , KOT MAHNA SINGH |            | 150 |
| GOVT MIDDLE SCHOOL , CHUHARPUR            |   | LUDHIANA                             | 50         |     |
| GOVT MIDDLE SCHOOL , MUSTABAD             |   | KAPURTHALA                           | 21         |     |
| GOVT MIDDLE SCHOOL , RAIPUR RAJPUTTA      |   |                                      | 20         |     |
| GOVT MIDDLE SCHOOL , SIDHPUR              |   |                                      | 26         |     |
| GOVT MIDDLE SCHOOL , DALA                 |   |                                      | 12         |     |
| GOVT MIDDLE SCHOOL , OTTAL SBS NAGAR      |   | NAWANSHAHR                           | 19         |     |
| GOVT MIDDLE SCHOOL , SOETA SBS NAGAR      |   |                                      | 20         |     |
| GOVT MIDDLE SCHOOL , SHEIKHUPUR SBS NAGAR |   |                                      | 40         |     |
| GOVT MIDDLE SCHOOL , PANDORI LAMIN        |   | HOSHIARPUR                           | 39         |     |
| GOVT MIDDLE SCHOOL , RAJWAL HAAR          |   |                                      | 40         |     |
| GOVT MIDDLE SCHOOL , RARA BLOCK TANDA 1   |   |                                      | 40         |     |
| GOVT MIDDLE SCHOOL ,                      |   |                                      | JALANDHAR  | 0   |

|            |   |            |     |
|------------|---|------------|-----|
| 24-10-2018 | GOVT MIDDLE SCHOOL , DHARIWAL JAPPUWAL      | GURDASPUR  | 20  |
|            | GOVT MIDDLE SCHOOL , ALNANGAL               |            | 50  |
|            | GOVT MIDDLE SCHOOL , BHULLE CHAK            |            | 41  |
|            | GOVT MIDDLE SCHOOL , ADARSH NAGAR           |            | 100 |
| 25-10-2018 | GOVT MIDDLE SCHOOL , KHERA                  | AMRITSAR   | 48  |
|            | GOVT MIDDLE SCHOOL , KHAWASPUR              | HOSHIARPUR | 50  |
|            | GOVT MIDDLE SCHOOL , KUHARKA                | TARANTARAN | 50  |
|            | GOVT MIDDLE SCHOOL , LAKHNA                 |            | 50  |
|            | GOVT MIDDLE SCHOOL , WARIYAM NANGAL         |            | 50  |
|            | GOVT MIDDLE SCHOOL , MOHLAKE                | AMRITSAR   | 96  |
|            | GOVT MIDDLE SCHOOL , KIRTANGARH             |            | 50  |
|            | GOVT MIDDLE SCHOOL , NANGAL GURU            |            | 50  |
|            | GOVT MIDDLE SCHOOL , JANIA                  |            | 50  |
|            | GOVT MIDDLE SCHOOL ,GADLI                   |            | 44  |
|            | GOVT MIDDLE SCHOOL , DANGON                 |            | 50  |
|            | GOVT MIDDLE SCHOOL , SUNNERWAL              | LUDHIANA   | 26  |
|            | GOVT MIDDLE SCHOOL , KHERA                  | KAPURTHALA | 47  |
|            | GOVT MIDDLE SCHOOL , NADALI                 |            | 22  |
|            | GOVT MIDDLE SCHOOL , RATTANAUABAD           |            | 13  |
|            | GOVT MIDDLE SCHOOL , BIHARIPUR              |            | 10  |
|            | GOVT MIDDLE SCHOOL , JETHUMAZARA            | NAWANSHAHR | 40  |
|            | GOVT MIDDLE SCHOOL , JANDI SBS NAGAR        |            | 40  |
|            | GOVT MIDDLE SCHOOL , BAHAR MAZARA SBS NAGAR |            | 42  |
|            | GOVT MIDDLE SCHOOL , LANGERI BL MAHILPUR    | HOSHIARPUR | 39  |
|            | GOVT MIDDLE SCHOOL , CHAKGURU HSP 8         |            | 38  |
|            | GOVT MIDDLE SCHOOL , VARAJODH SINGH LOHIA   | JALANDHAR  | 13  |
|            | GOVT MIDDLE SCHOOL , KANG KALAN             |            | 25  |
|            | GOVT MIDDLE SCHOOL , RAIPUR ARAIAN          |            | 33  |
|            | GOVT MIDDLE SCHOOL , KOTHA                  |            | 16  |
|            | GOVT MIDDLE SCHOOL , MANDI GSP 1            |            | 40  |
|            | GOVT MIDDLE SCHOOL , KIRIAFGANI             | GURDASPUR  | 48  |
|            | GOVT MIDDLE SCHOOL , KOHALI                 |            | 50  |
| 26-10-2018 | GOVT MIDDLE SCHOOL , SARHALI KALLAN         | TARANTARAN | 48  |
|            | GOVT MIDDLE SCHOOL , NOORDI                 |            | 50  |
|            | GOVT MIDDLE SCHOOL , MUCHHAL                | AMRITSAR   | 48  |
|            | GOVT MIDDLE SCHOOL , MULECHAK ASR 4         |            | 100 |
|            | GOVT MIDDLE SCHOOL , KAMBO                  |            | 50  |
|            | GOVT MIDDLE SCHOOL , DANGORA                | LUDHIANA   | 23  |
|            | GOVT MIDDLE SCHOOL , NEELAWARA SBS NAGAR    | KAPURTHALA | 0   |
|            | GOVT MIDDLE SCHOOL , MANDHIANI SBS NAGAR    | NAWANSHAHR | 25  |
|            | GOVT MIDDLE SCHOOL , CHAKPHULLU             |            | 25  |
|            | GOVT MIDDLE SCHOOL , MIRJAPUR               | HOSHIARPUR | 39  |
|            | GOVT MIDDLE SCHOOL , NAUNEETPUR             |            | 32  |
|            | GOVT MIDDLE SCHOOL , DHEERPUR               |            | 38  |
|            | GOVT MIDDLE SCHOOL , FATEH JALAL            | JALANDHAR  | 50  |
|            | GOVT MIDDLE SCHOOL , FAJILPUR               |            | 31  |
|            | GOVT MIDDLE SCHOOL , MISHARPUR              |            | 35  |
|            | GOVT MIDDLE SCHOOL , JADPUR                 | GURDASPUR  | 41  |
|            | GOVT MIDDLE SCHOOL , SHAHBAD                |            | 47  |
|            | GOVT MIDDLE SCHOOL , PANDORI TAKHATMAL      |            | 55  |
|            | GOVT MIDDLE SCHOOL , RASOOLPUR              |            | 50  |
|            |   | TARANTARAN | 50  |

|   |   |                               |            |    |
|---|---|-------------------------------|------------|----|
| 27-10-2018                              | GOVT MIDDLE SCHOOL, MOURE                     | AMRITSAR                      | 50         |    |
|   | GOVT MIDDLE SCHOOL, RAMGARH NAWAN PIND        | LUDHIANA                      | 30         |    |
|   | GOVT MIDDLE SCHOOL, BAJA                      | KAPURTHALA                    | 42         |    |
|   | GOVT MIDDLE SCHOOL, CHAK GURU                 | NAWANSHAHR                    | 20         |    |
|   | GOVT MIDDLE SCHOOL, BAINSAWAN                 | HOSHIARPUR                    | 36         |    |
|   | GOVT MIDDLE SCHOOL, BAHGA                     |                               | 36         |    |
|   | GOVT MIDDLE SCHOOL, JOHAL                     |                               | 33         |    |
|   | GOVT MIDDLE SCHOOL, SANGATPUR                 | JALANDHAR                     | 22         |    |
|   | GOVT MIDDLE SCHOOL, SHAHPUR                   |                               | 25         |    |
|   | GOVT MIDDLE SCHOOL, MIANWAL                   |                               | 48         |    |
|   | GOVT MIDDLE SCHOOL, SAHARI                    | GURDASPUR                     | 50         |    |
|   | GOVT MIDDLE SCHOOL, DHAMRAI                   |                               | 38         |    |
|   | 28-10-2018                                    | GOVT MIDDLE SCHOOL, USMAN     | TARANTARAN | 38 |
|   |   | GOVT MIDDLE SCHOOL, SINGHPURA |            | 50 |
| GOVT MIDDLE SCHOOL, CHOWNK METHA        |   | AMRITSAR                      | 50         |    |
| GOVT MIDDLE SCHOOL, KATRA JALIYAN       |   |                               | 50         |    |
| GOVT MIDDLE SCHOOL, NEW MODEL TOWN      |   |                               | 50         |    |
| GOVT MIDDLE SCHOOL, KALER GHUMAN        |   |                               | 45         |    |
| GOVT MIDDLE SCHOOL, CHAK SINGHA         |   | HOSHIARPUR                    | 29         |    |
| GOVT MIDDLE SCHOOL, BAJACHAK            |   |                               | 31         |    |
| GOVT MIDDLE SCHOOL, PARSRAMPUR          |   | JALANDHAR                     | 27         |    |
| GOVT MIDDLE SCHOOL, SALEMPUR MASANDA    |   |                               | 29         |    |
| GOVT MIDDLE SCHOOL, RAM NAGAR           |   | GURDASPUR                     | 50         |    |
| GOVT MIDDLE SCHOOL, JANGLAN             |   |                               | 50         |    |
| GOVT MIDDLE SCHOOL, TALWANDI            |   |                               | 32         |    |
| GOVT MIDDLE SCHOOL, SEKHA               |   |                               | 50         |    |
| 29-10-2018                              | GOVT MIDDLE SCHOOL, WALIPUR                   | TARANTARAN                    | 50         |    |
|   | GOVT MIDDLE SCHOOL, BUDHATHEH (BIAS)          | AMRITSAR                      | 50         |    |
|   | GOVT MIDDLE SCHOOL, DHOOTKHURD                | HOSHIARPUR                    | 28         |    |
|   | GOVT MIDDLE SCHOOL, GHUL                      |                               | 33         |    |
|   | GOVT MIDDLE SCHOOL, JHARERA BL. TALWARA       |                               | 37         |    |
|   | GOVT MIDDLE SCHOOL, BABULABH SINGH NAGAR      | JALANDHAR                     | 50         |    |
|   | GOVT MIDDLE SCHOOL, THIKRIWAL                 | GURDASPUR                     | 39         |    |
|   | GOVT MIDDLE SCHOOL, QILANATHU SINGH           |                               | 37         |    |
| 30-10-2018                              | GOVT MIDDLE SCHOOL, BHANGLAN                  | TARANTARAN                    | 50         |    |
|   | GOVT MIDDLE SCHOOL, BAINKA                    |                               | 50         |    |
|   | GOVT MIDDLE SCHOOL, DAGHDOGRA                 | AMRITSAR                      | 50         |    |
|   | GOVT MIDDLE SCHOOL, THAUL KALLAN              |                               | 51         |    |
|   | GOVT MIDDLE SCHOOL, BAROTI                    | HOSHIARPUR                    | 35         |    |
|   | GOVT MIDDLE SCHOOL, DADIANA KALAN             |                               | 35         |    |
|   | GOVT MIDDLE SCHOOL, KHAKH                     |                               | 34         |    |
|   | GOVT MIDDLE SCHOOL, ABDULAPUR                 |                               | 32         |    |
|   | GOVT MIDDLE SCHOOL, BILLI CHAHARMI BL SHAKHOT | JALANDHAR                     | 48         |    |
|   | GOVT MIDDLE SCHOOL, SINGHPUR DONA             |                               | 50         |    |
|   | GOVT MIDDLE SCHOOL, LEEL KALLAN               | GURDASPUR                     | 50         |    |
|   | GOVT MIDDLE SCHOOL, KAURE                     |                               | 44         |    |
|   | GOVT MIDDLE SCHOOL, MULLIANWAN                |                               | 50         |    |
|   | GOVT MIDDLE SCHOOL, BHAGWANPUR                | TARANTARAN                    | 50         |    |
| GOVT MIDDLE SCHOOL, BHAINIGURMUKH SINGH | 50  |                               |            |    |

|                                 |  |            |     |
|---------------------------------|--|------------|-----|
| 31-10-2018                      | GOVT MIDDLE SCHOOL, NANGAL KHANOURA        | HOSHIARPUR | 35  |
|                                 | GOVT MIDDLE SCHOOL, BEHBIDHIYA             |            | 34  |
|                                 | GOVT MIDDLE SCHOOL, SALEMPUR               |            | 36  |
|                                 | GOVT MIDDLE SCHOOL, KABIR NAGAR GALI NO.6  | JALANDHAR  | 88  |
|                                 | GOVT MIDDLE SCHOOL, RAVIDASS NAGAR         |            | 50  |
|                                 | GOVT MIDDLE SCHOOL, BUDHIANA               |            | 40  |
|                                 | GOVT MIDDLE SCHOOL, MAHOWAL                |            | 30  |
|                                 | GOVT MIDDLE SCHOOL, RAHIMABAD              | GURDASPUR  | 45  |
|                                 | GOVT MIDDLE SCHOOL, BHAINI PASWAL          |            | 45  |
|                                 | GOVT MIDDLE SCHOOL, BHAGATPUR RAMPUR       |            | 45  |
|                                 | GOVT MIDDLE SCHOOL, KOT MAJLAS             |            | 46  |
|                                 | GOVT MIDDLE SCHOOL, MURADPUR QADIAN        |            | 29  |
|                                 | GOVT MIDDLE SCHOOL, MANJAWALI BL FATEHGARH |            | 43  |
|                                 | GOVT MIDDLE SCHOOL, RASOOLPUR B.DEENANAGAR |            | 50  |
| GOVT MIDDLE SCHOOL, ASSAL PATTI | TARANTARAN                                 |            | 50  |
| 01-11-2018                      | GOVT MIDDLE SCHOOL, BAKIPUR                |            | 50  |
|                                 | GOVT MIDDLE SCHOOL, NANGAL WANJAWALA       | AMRITSAR   | 45  |
|                                 | GOVT MIDDLE SCHOOL, ROKHE                  |            | 57  |
|                                 | GOVT MIDDLE SCHOOL, HARDOPUTLI AJNALA 1    |            | 50  |
|                                 | GOVT MIDDLE SCHOOL, BADHOWAN SARDULLAPUR   | HOSHIARPUR | 50  |
|                                 | GOVT MIDDLE SCHOOL, KAHARPUR               |            | 50  |
|                                 | GOVT MIDDLE SCHOOL, MEHDOOD                |            | 50  |
|                                 | GOVT MIDDLE SCHOOL, BHANDAL DONA KPT 1     | KAPURTHALA | 19  |
|                                 | GOVT MIDDLE SCHOOL, KADUPUR                |            | 23  |
|                                 | GOVT MIDDLE SCHOOL, KOT KRAR KHAN          |            | 53  |
| 02-11-2018                      | GOVT MIDDLE SCHOOL, JHANDER                | TARANTARAN | 47  |
|                                 | GOVT MIDDLE SCHOOL, GURALA AJNALA 2        | AMRITSAR   | 50  |
|                                 | GOVT MIDDLE SCHOOL, SARANGDEV AJNALA 2     |            | 150 |
|                                 | GOVT MIDDLE SCHOOL, MUKHOMAZARA            | HOSHIARPUR | 45  |
|                                 | GOVT MIDDLE SCHOOL, HALER JANARDHAN        |            | 46  |
|                                 | GOVT MIDDLE SCHOOL, ASSOPUR BL HAJIPUR     |            | 39  |
|                                 | GOVT MIDDLE SCHOOL, TAHLI                  | JALANDHAR  | 50  |
|                                 | GOVT MIDDLE SCHOOL, BOHANI BL. PHAGWARA    | KAPURTHALA | 45  |
| 03-11-2018                      | GOVT MIDDLE SCHOOL, JARMASTPUR             | TARANTARAN | 50  |
|                                 | GOVT MIDDLE SCHOOL, DARAJKE                |            | 50  |
|                                 | GOVT MIDDLE SCHOOL, BUGGA                  |            | 45  |
|                                 | GOVT MIDDLE SCHOOL, TERA RAJPUTTAN         | AMRITSAR   | 100 |
|                                 | GOVT MIDDLE SCHOOL, BHAGRAN                | HOSHIARPUR | 47  |
|                                 | GOVT MIDDLE SCHOOL, VADESRO                |            | 40  |
|                                 | GOVT MIDDLE SCHOOL, KHOJPUR                |            | 47  |
|                                 | GOVT MIDDLE SCHOOL, SANORA                 | JALANDHAR  | 42  |
|                                 | GOVT MIDDLE SCHOOL, HAVIBWAL               | KAPURTHALA | 40  |
|                                 | GOVT MIDDLE SCHOOL, KUKAN                  |            | 21  |
| GOVT MIDDLE SCHOOL, NAINAZARA   | NAWANSHAHR                                 |            | 24  |
| 04-11-2018                      | GOVT MIDDLE SCHOOL, BHULLAR                | TARANTARAN | 47  |
|                                 | GOVT MIDDLE SCHOOL, PANDORI HASAN          |            | 41  |
|                                 | GOVT MIDDLE SCHOOL, KISHANPURA             | AMRITSAR   | 46  |
|                                 | GOVT MIDDLE SCHOOL, SHEKH BHATTI           |            | 54  |
|                                 | GOVT MIDDLE SCHOOL, GHOREWAHA              |            | 50  |
|                                 | GOVT MIDDLE SCHOOL, BHARTA GANESHPUR       | HOSHIARPUR | 48  |
|                                 | GOVT MIDDLE SCHOOL, BASSI WAHID            |            | 47  |
| GOVT MIDDLE SCHOOL, KLOA        | 43   |            |     |



|                           |   |            |     |
|---------------------------|---|------------|-----|
| 05-11-2018                | GOVT MIDDLE SCHOOL,JAURSINGHWALA            | TARANTARAN | 50  |
|                           | GOVT MIDDLE SCHOOL, VIJAYNAGAR              | AMRITSAR   | 150 |
|                           | GOVT MIDDLE SCHOOL, GIGANWAL                |            | 47  |
|                           | GOVT MIDDLE SCHOOL,CHITTON                  | HOSHIARPUR | 40  |
|                           | GOVT MIDDLE SCHOOL,TANGRANIAN               |            | 39  |
|                           | GOVT MIDDLE SCHOOL, BEHRAM SARISHTA         | JALANDHAR  | 50  |
|                           | GOVT MIDDLE SCHOOL,KAMRAI                   |            | 44  |
|                           | GOVT MIDDLE SCHOOL, BHAINI HUSSEKHAN        | KAPURTHALA | 83  |
| 06-11-2018                | GOVT MIDDLE SCHOOL,BIHARIPUR                | TARANTARAN | 50  |
|                           |   | AMRITSAR   | 0   |
|                           |   | LUDHIANA   | 0   |
|                           | GOVT MIDDLE SCHOOL,MARNAIYA KHURD           |            | 32  |
|                           | GOVT MIDDLE SCHOOL,PURANA BHANGALA          | HOSHIARPUR | 46  |
|                           | GOVT MIDDLE SCHOOL,SHERPUR                  |            | 50  |
|                           | GOVT MIDDLE SCHOOL,MIYANI BHGUPURIYA        |            | 58  |
|                           | GOVT MIDDLE SCHOOL,BALLOCHAK                | KAPURTHALA | 18  |
| 07-11-2018                | CLOSED DUE TO DIWALI FESTIVAL               |            | 0   |
| 08-11-2018                | STUDENTS NOT VISITED                        |            | 0   |
| 09-11-2018                | GOVT MIDDLE SCHOOL,BHAINIMUTTYAN            |            | 30  |
|                           | GOVT MIDDLE SCHOOL, CHABAL KHURD            | TARANTARAN | 25  |
|                           | GOVT MIDDLE SCHOOL,CHHICHHREWAN             |            | 25  |
|                           | GOVT MIDDLE SCHOOL, SHERCHAK                |            | 30  |
|                           | GOVT MIDDLE SCHOOL, FAIZPURA                | AMRITSAR   | 150 |
|                           | GOVT MIDDLE SCHOOL, BHAROWAL                |            | 35  |
|                           | GOVT MIDDLE SCHOOL,FATEHGARH NIARA          | HOSHIARPUR | 41  |
|                           | GOVT MIDDLE SCHOOL,BHANOWAL                 |            | 34  |
| 10-11-2018                | GOVT MIDDLE SCHOOL,RAKH DINEWAL             |            | 35  |
|                           | GOVT MIDDLE SCHOOL,GAGREWAL                 | TARANTARAN | 27  |
|                           | GOVT MIDDLE SCHOOL,KHOJKIPUR                |            | 20  |
|                           | GOVT MIDDLE SCHOOL,KOT MAIRA                |            | 35  |
|                           | GOVT MIDDLE SCHOOL,MANAN HANA               | HOSHIARPUR | 32  |
|                           | GOVT MIDDLE SCHOOL,BEHWALPUR                |            | 15  |
| 11-11-2018                | GOVT MIDDLE SCHOOL,PATRARA                  | HOSHIARPUR | 34  |
|                           | GOVT MIDDLE SCHOOL,KHOKHARDWAKHAR           |            | 31  |
|                           | GOVT MIDDLE SCHOOL,SABOWAL                  |            | 27  |
|                           | GOVT MIDDLE SCHOOL, FASLABAD                | KAPURTHALA | 9   |
| 12-11-2018                | GOVT MIDDLE SCHOOL,SHAKRI                   |            | 18  |
|                           | GOVT MIDDLE SCHOOL, KRISHNA NAGAR           | TARANTARAN | 13  |
|                           | GOVT MIDDLE SCHOOL, SANGATPUR               |            | 19  |
|                           | GOVT MIDDLE SCHOOL, KRISHNA NAGAR           |            | 50  |
|                           | GOVT MIDDLE SCHOOL,NAWAN PIND               | AMRITSAR   | 50  |
|                           | GOVT MIDDLE SCHOOL,SAIDUPUR DATA            |            | 31  |
|                           | GOVT MIDDLE SCHOOL,MUSAHIBPUR               | HOSHIARPUR | 27  |
|                           | GOVT MIDDLE SCHOOL,MOJOWAL MAJARA SBS NAGAR |            | 37  |
|                           | GOVT MIDDLE SCHOOL,NANOWAL BET SBS NAGAR    |            | 47  |
|                           | GOVT MIDDLE SCHOOL, GHAMOUR                 | NAWANSHER  | 34  |
| GOVT MIDDLE SCHOOL, MOHAR |   | 22         |     |
|                           | GOVT MIDDLE SCHOOL,TALWANDI SOBASINGH       |            | 27  |
|                           | GOVT MIDDLE SCHOOL, BHAINI MATTI            | TARANTARAN | 28  |
|                           | GOVT MIDDLE SCHOOL, MADARMATHRA BHAGI       |            | 29  |

|                             |                                      |            |       |
|-----------------------------|--------------------------------------|------------|-------|
| 13-11-2018                  | GOVT MIDDLE SCHOOL, TALWANDI RAIDADU | AMRITSAR   | 50    |
|                             | GOVT MIDDLE SCHOOL, RASSOLPUR ROHI   |            | 60    |
|                             | GOVT MIDDLE SCHOOL, GUJARPURA        |            | 50    |
|                             | GOVT MIDDLE SCHOOL, BASARKE          |            | 50    |
|                             | GOVT MIDDLE SCHOOL, BHAINI           | HOSHIARPUR | 34    |
|                             | GOVT MIDDLE SCHOOL, MURADPUR GURU    |            | 27    |
|                             | GOVT MIDDLE SCHOOL, KHUSHHALPUR      |            | 33    |
|                             | GOVT MIDDLE SCHOOL, KAHRRI           |            | 30    |
| 14-11-2018                  | GOVT MIDDLE SCHOOL, UDOKE KALAN      | AMRITSAR   | 51    |
|                             | GOVT MIDDLE SCHOOL, KHURMANIA        |            | 40    |
|                             | GOVT MIDDLE SCHOOL, KHASA PIND       |            | 41    |
|                             | GOVT MIDDLE SCHOOL, FAKHRA MATPUR    | HOSHIARPUR | 27    |
|                             | GOVT MIDDLE SCHOOL, TARAGARAH        |            | 34    |
|                             | GOVT MIDDLE SCHOOL, DHAMIAN          |            | 31    |
| 15-11-2018                  | GOVT MIDDLE SCHOOL, DODESODIYAN      | TARANTARAN | 25    |
|                             | GOVT MIDDLE SCHOOL, MARI UDHOKE      |            | 27    |
|                             | GOVT MIDDLE SCHOOL, DOHAR            | HOSHIARPUR | 32    |
|                             | GOVT MIDDLE SCHOOL, BIGGOWAL         |            | 26    |
|                             | GOVT MIDDLE SCHOOL, RAULI            |            | 32    |
| 16-11-2018                  | GMS JAINPUR                          | KAPURTHALA | 19    |
| 17-11-2018                  | STUDENTS NOT VISITED                 |            | 0     |
| 18-11-2018                  | GMS BEGEPUR                          | TARANTARAN | 22    |
| 19-11-2018                  | GMS DAMULIAN                         | KAPURTHALA | 21    |
| 20-11-2018                  | GMS KHATTI PHAGWARA                  | KAPURTHALA | 24    |
|                             | GMS BAJIGAR BASTI PHAGWARA           | KAPURTHALA | 77    |
| 21-11-2018 TO<br>28-11-2018 | STUDENTS NOT VISITED                 |            | 0     |
| 29-11-2018                  | GMS MAHNEKE                          | TARANTARAN | 42    |
| 07-12-2018                  | GMS CHUHARPUR BLOCK 1 NSR            | NAWASHER   | 41    |
| 08-12-2018                  | GMS PANDORI MUSHARKATI JALANDHAR     | JALANDHAR  | 7     |
| 11-12-2018                  | GMS GAJJAL                           | TARANTARAN | 26    |
| 12-12-2018                  | GMS TAJPUR                           | KAPURTHALA | 35    |
| 15-12-2018                  | GMS DULLOWAL                         | KAPURTHALA | 21    |
| 16-12-2018                  | GMS CHHOKRA                          | JALANDHAR  | 35    |
| 22-12-2018                  | GMS ALLOWAL                          | TARANTARAN | 57    |
| 19-01-2019                  | GMS SAILKIANA(PHILLOR)               | LUDHIANA   | 49    |
| 03-02-2019                  | GMS JHANDER MAHAN PURKHAN ()         | TARANTARN  | 23    |
| 08-02-2019                  | GMS CAMP( BATALA)                    | GURDASPUR  | 55    |
| 27-03-2019                  | GMS BHAGWANPUR BLOCK BHULATH         | kapurthala | 22    |
| 29-03-2019                  | GMS RAMPUR BHOOTWIND                 | TARANTARAN | 20    |
| TOTAL STUDENTS              |                                      |            | 33460 |