

Paper: Science

Class: 7th

Time: 3 hrs.

Theory: 70 Marks

Question paper pattern

1. The question paper consists of 21 questions. All the questions are compulsory. Distribution of marks is given below.
2. Question no.1 is of total 14 marks. It consists of 14 questions and each question consists of 1 mark each.
3. Question nos. 2 to 11 will be of 2 marks each.
4. Question nos.12 to 18 will be of 3 marks each.
5. Question nos. 19 to 21 will be of 5 marks each. There will be internal choice and internal choice questions will be from same chapter.

Blueprint

Chapter No	1 Mark	2 Marks	3 Marks	5 Marks	Total Marks
1	1	1			3
2	1		1		4
3	1	1			3
4	1		1		4
5	1			1	6
6		1	1		5
7	1	1			3
8	1	1			3
9	1	1			3
10	1		1		4
11	1		1		4
12	1	1			3
13	1		1		4
14	1			1	6
15	1			1	6
16		1	1		5
17		1			2
18		1			2

Question Paper: Science

Total Marks- 70

Class: 6th

Time: 3 hours

All Questions are compulsory.

Section: A : 14 Marks

QUESTION 1. CHOOSE THE CORRECT OPTION:

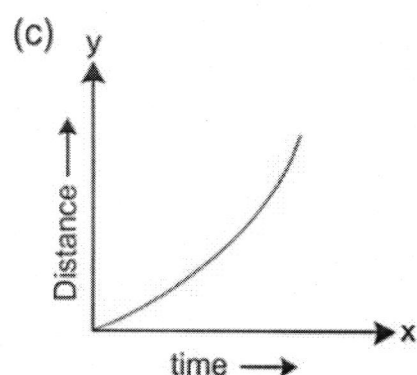
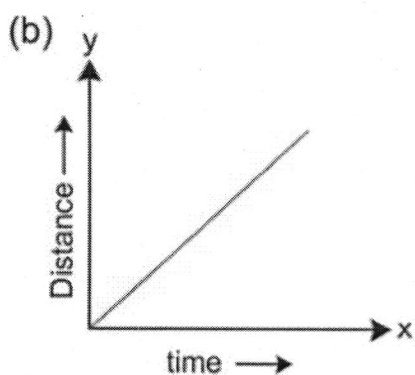
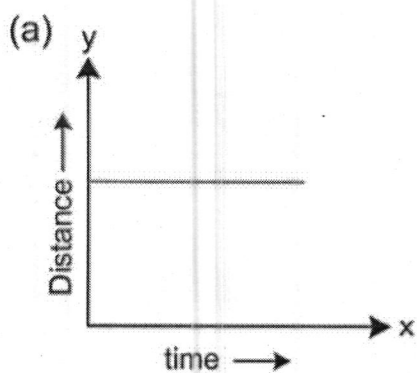
I. What are green coloured thread like structures over the pond water are called?

- a) Fungi b) Algae c) Amoeba d) Paramecium

II. Which is the simplest Carbohydrate?

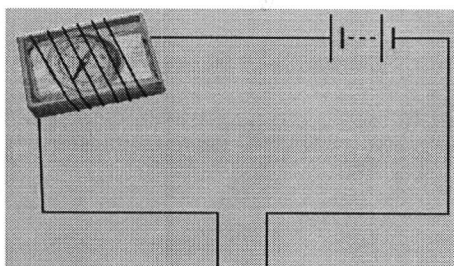
- a) Glucose b) Sucrose c) Starch d) All of the above

III. Which of the following Distance-Time Graph shows the object at rest position?



- a) A b) B c) C d) None of the above

IV. What is the reason of deflection of compass when we on the switch?



- a) Due to heat b) Formation of Magnetic Field c) Due to Chemical Reaction d) None of the above

V. Sarabjeet tested Litmus Paper with sugar solution, Vinegar, baking soda solution and soap solution. He observed that except one solution, all other solutions changed the colour of litmus paper. Which solution did not affect the litmus paper?

- a) Sugar Solution b) Vinegar c) Baking Soda Solution d) Soap Solution

VI. What kind of clothes do we wear in summer?

- a) Cotton b) Silky c) jute d) wool

VII. When Newton Disc is rotated fast which colour is seen?



- a) Black b) White c) Blue d) Yellow

VIII. Atmospheric pressure _____ with increase in wind velocity.

- a) Decreases b) Increases c) Remains same d) None of the above

IX. Which soil has the maximum water holding capacity?

- a) Sandy soil b) Clay Soil c) Loamy Soil d) None of the above.

X. Where is Saliva produced?

- a) Stomach b) Pancreas c) Salavary Glands d) None of the above

XI. Which organism uses more than one organ for Respiration?

- a) Fish b) Cockroach c) Human d) Frog

XII. Name the tissue responsible for transportation of water in plants?

- a) Phloem b) Xylem c) Stomata d) Endodermis

XIII. Name the factors, which are helpful in Cross-Pollination?

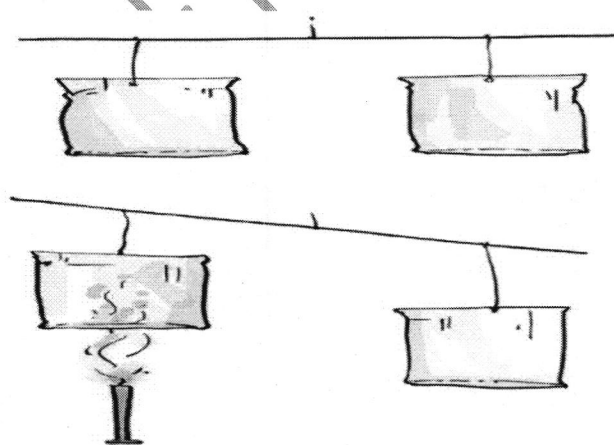
- a) Air b) Water c) Insects d) All the above

XIV. By which process, clothes get dry due to Sunlight?

- a) Conduction b) Convection c) Radiation d) Evaporation

Part B: (2 Marks Questions)

2. Write down the differences between Parasites and Saprophytes?
3. Make sketches of the two stages in the life history of silkworm which are directly related to the production of Silk?
4. How Iron Gate can be protected from rusting by applying Paint?
5. Name the factors that determine the weather of a particular place?
6. Which Process is shown in the following diagram:



7. What is the difference between Clay soil and Sandy soil?
8. Write the names of reproductive organs by drawing the diagram of a flower?
9. Suppose you are given responsibility of maintenance of a garden. What steps will you follow to optimise the use of water?

10. How forests help in preventing floods?

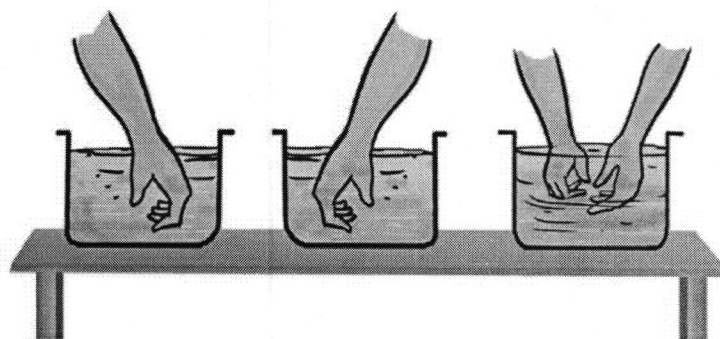
11. Un-treated Human waste is a health hazard. Comment.

Part : C

Total Marks: 21 (Each question carries 3 marks.)

12. Why glucose is considered source of instant energy?

13. In the diagram below vessel 1 contains hot water, vessel 2 contains cold water and vessel 3 contains water at normal temperature. A student puts his one hand in vessel 1 and other hand in vessel 2. After some time he puts his both the hands in vessel 3. What will he feel? Explain.



14. Why An athlete takes deep and swift breaths after the completion of race ?

15. What is Stomata ? Write the two functions of stomata ?

16. The distance between two railway stations is 200 KM. A train takes 4 hours to cover this distance. Calculate the speed of the train.

17. Explain the factors responsible for low ground water level ?

18. Describe how to prepare crystals of Copper Sulphate ?

Part (D)

Total marks- 15, Attempt any 3 questions, There is internal choice in every part.

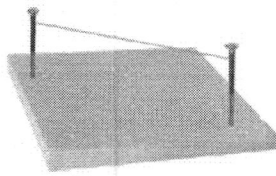
19. a) Write the difference between acid and base? (2)

b) Litmus paper is dipped in a solution. Its colour remains blue. What is the nature of solution? Explain. (3)

Or

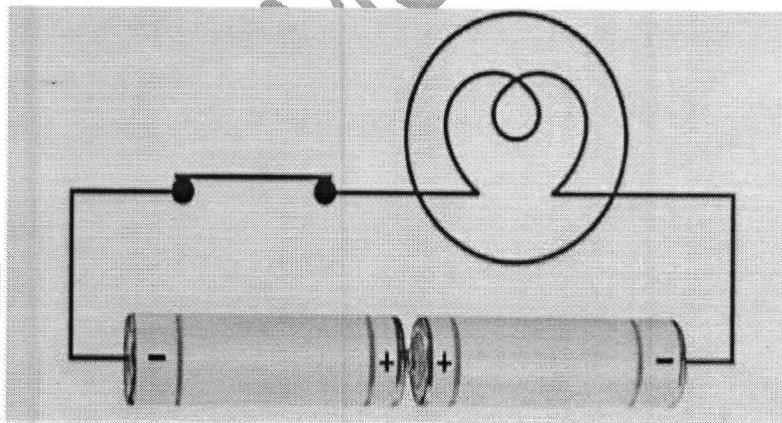
You have been given three liquids, one is Hydrochloric acid, second is Sodium Hydroxide and third is Sugar Solution. How will you identify these solutions using turmeric solution as indicator? (5)

20. Which effect of electric current is shown in the given diagram? Name the electrical gadgets whose working is based upon this effect. Give Examples. (5)



Or

- a) Write any two effects of electric current? (2)
- b) Electric bulb is not illuminated in circuit shown below. Can you find out the reason for it? What necessary changes in the circuit would you refer to illuminate the bulb ? (3)



21. a) Write down the characteristics of the image formed by plane mirror. (3)
- b) What is virtual image ? Give a situation in which virtual image is formed ? (2)

or

- a) Which type of mirror forms a real image? (2)
- b) Differentiate between convex and concave lens? (3)